



**City of McCall
City Council**

**AGENDA
Special Meeting
December 16, 2022 at 2:30 PM
Legion Hall – Below City Hall
216 East Park Street
McCall, ID
AND MS TEAMS Virtual**

American with Disabilities Act Notice: The City Council Meeting room is accessible to persons with disabilities. If you need assistance, please contact City Hall at 634-7142 at least 48 hours prior to the meeting. Council Meetings are available for in person and virtual attendance. Any member of the public can join and listen only to the meeting at 9:00 am by calling in as follows: **Dial 208-634-8900 when asked for the Conference ID enter: 889 404 895#**
Or you may watch live by clicking this link: <https://youtu.be/bZOJuoSwMow>

OPEN SESSION ROLL CALL

BUSINESS AGENDA

AB 22-329 Work Session on DRAFT Access McCall: ADA Self-Assessment & Transition Plan and Direction to Staff (Action Item)

AB 22-330 Update on Parks, Recreation and Open Space Plan findings

ADJOURN

**McCALL CITY COUNCIL
AGENDA BILL**

216 East Park Street
McCall, Idaho 83638

Number AB 22-329
Meeting Date December 16, 2022

AGENDA ITEM INFORMATION				
SUBJECT: <i>Work Session on DRAFT Access McCall: ADA Self-Assessment & Transition Plan and Direction to Staff</i>		<i>Department Approvals</i>	<i>Initials</i>	<i>Originator or Supporter</i>
		Mayor / Council		
		City Manager		
		Clerk	<i>AW</i>	Originator
		Treasurer		
		Community Development		
		Police Department		
		Public Works		
		Golf Course		
			Parks and Recreation	
COST IMPACT:	65,000	Airport		
FUNDING SOURCE:	Clerk's Budget	Library		
		Information Systems		
TIMELINE:	FY23	Grant Coordinator		

SUMMARY STATEMENT:

The intent of the Work Session is to provide the Mayor and Council with an overview of the findings as they relate to public buildings and public rights of way in McCall, which are the focus of the Plan. Additional recommendations for policy and program changes are integrated into the Plan. The consultant will provide an overview of this report and other key findings during the December 16 Work Session.

Please take time to read through the attached Executive Summary and mark it up with comments and questions. The consultant intent is to make sure the features of this plan, which are technical by nature, are easily understood in terms of their importance in providing an accessible McCall for everyone.

Some questions to consider as you read through the document:

- Do the priorities identified for public buildings/facilities, curb ramps, sidewalks, and pathways make sense?
- Does the Council agree that setting aside \$50,000 per year for ADA upgrades can be pursued during the next budget cycle?
- Does the Council agree that key program and policy changes could occur within 12 months after adoption of the plan?
- Does the Council agree that a two-step adoption process—first through P&Z then through Council—is the best way to proceed?

RECOMMENDED ACTION:

Direction to Consultant and Staff

RECORD OF COUNCIL ACTION	
MEETING DATE	ACTION



December 7, 2022

To: City of McCall Mayor and Council

From: Don Kostelec, Vitruvian Planning

CC: BessieJo Wagner

Subject: December 16 Work Session on DRAFT Access McCall: ADA Self Assessment & Transition Plan

This Work Session packet contains an Executive Summary of the findings and progress made on Access McCall—the City’s ADA Self Assessment and Transition Plan. The effort commenced in May 2022, led by Vitruvian Planning with support from faculty and students at Lewis-Clark State College and Idaho Access Project

The consultant team is approximately 75% through the effort, with a goal of having the Council formally adopt the final Access McCall plan in early 2023. Once adopted, Vitruvian Planning and Idaho Access Project will organize and lead a one-day training on the findings of the Plan and key elements of ADA compliance. This will address facilities and infrastructure, as well as program and policy measures that improve accessibility.

Work Session Purpose

The intent of the Work Session is to provide the Mayor and Council with an overview of the findings as they relate to public buildings and public rights of way in McCall, which are the focus of the Plan. Additional recommendations for policy and program changes are integrated into the Plan. We will provide an overview of this report and other key findings during the December 16 Work Session.

A Self Assessment and Transition Plan is required by federal law and is intended to serve as a guide on how the City will *transition* its facilities, infrastructure, and services to comply with the Americans with Disabilities Act. Based on the findings, it is possible for the City of McCall to transition its existing facilities and infrastructure to compliance over the next 20 years. This requires a combination of funding pursuits for major structure upgrades to buildings, sidewalks, curb ramps, and pathways and an annual budget allocation (recommended at \$50,000) for other improvements.

The City’s recent investments in facilities such as the new Library, Community/Senior Center site upgrades, and Brown Park reconstruction helped bring many facets of these facilities into compliance with ADA. The investments in sidewalks in the downtown core also helped further this effort.

What we need from you

Please take time to read through the Executive Summary and mark it up with comments and questions. We want to make sure the features of this plan, which are technical by nature, are easily understood in terms of their importance in providing an accessible McCall for everyone.

Some questions to consider:

- Do the priorities identified for public buildings/facilities, curb ramps, sidewalks, and pathways make sense?
- Does the Council agree that setting aside \$50,000 per year for ADA upgrades can be pursued during the next budget cycle?
- Does the Council agree that key program and policy changes could occur within 12 months after adoption of the plan?
- Does the Council agree that a two-step adoption process—first through P&Z then through Council—is the best way to proceed?



1. Introduction & Purpose

Access McCall is the City of McCall's Self-Assessment and Transition Plan to fulfill requirements set forth in the Americans with Disabilities Act (ADA) of 1990. More than that, this Plan links other City plans and goals to an overall theme of ensuring McCall's facilities, streets, programs, and policies provide and promote access to everyone who resides in and visits the area.

This Plan is generated through a combination of technical analysis and public input to define priorities for McCall so the City can transition its facilities and services into compliance over the next 20 years. Various people and organizations provided input through online surveys, one-on-one interviews, and listening sessions to help identify and prioritize needs for people with disabilities and those with other mobility needs.



Access McCall provides more than recommendations to rebuild or retrofit older infrastructure and modify existing programs and policies, which is the foundation for complying with ADA requirements. It also identifies priorities for expanding infrastructure like sidewalks and pathways to provide access to key destinations around the city, recognizing that some of these routes are a higher priority for the City than retrofitting some older infrastructure in terms of making the place accessible.

These targeted infrastructure investments, along with upgrading facilities like public restrooms, public parks, and other public building features, will take time and notable financial resources. The City is already on a path to upgrading many of its building and streets to improve access. For other needs, *Access McCall* provides a generalized schedule of when the City should pursue completing additional facility and infrastructure investments. Meanwhile, the City can more quickly and easily update and amend its existing policies and adapt various programs to comply with ADA and improve access to everyone in McCall.

ADA Summary

The Americans with Disabilities Act (ADA), enacted on July 26, 1990, provides comprehensive civil rights protections to persons with disabilities in the areas of employment, state and local government services, access to public accommodations, transportation, and telecommunications. The ADA is divided into five titles that relate to different facets of public life:

- Title I: Employment
- **Title II: Public Services - State and Local Governments**
- Title III: Public Accommodations and Services Operated by Private Entities
- Title IV: Telecommunications; and
- Title V: Miscellaneous Provisions

Title II of the ADA is what *Access McCall* addresses. It prohibits state and local governments from discriminating against persons with disabilities by requiring the City to make all programs, services, and activities accessible to persons with disabilities. Title II requires that a public entity evaluate its services, programs, policies, and practices to determine whether they are in compliance with the nondiscrimination requirements of the ADA.

Title II Requirements

Title II outlines a two-step process for communicating to the public how an agency intends to meet the requirements of ADA. The two steps are a self-assessment and transition plan. All public agencies with 50 or more employees are required to complete these two steps to fulfill their requirements under ADA. The City previously undertook an effort to meet these requirements in 2011, which resulted in the adoption of Resolution No. 11-14 that officially endorsed a self-assessment and transition plan that was in effect until *Access McCall* was developed to take its place.

Step 1: Self-Assessment. The requirement to conduct a self-assessment of the City of McCall's facilities, infrastructure, programs, and policies identifies how the City is addressing requirements of ADA. The self-assessment identifies methods to improve the accessibility of the many services the City provides. To fulfill self-assessment requirements, the City's consultants conducted in-the-field data collection for all municipal buildings, streets, parks, and pathways during the summer of 2022. Additionally, the consultant reviewed City policies, programs, and services to determine how they comply with ADA requirements and how they may be modified to better address the needs of people with disabilities.



Step 2: Transition Plan. The ADA requires that a Transition Plan be prepared, to describe any structural or physical changes required to make facilities accessible. A self-assessment of programs and facilities feeds the findings of the Transition Plan, which outlines methods by which program, policy, physical or structural changes will be made to affect the nondiscrimination policies described in Title II.

The Transition Plan component for McCall includes program and policy recommendations that should be modified within a year after adoption of the Plan. The facilities and infrastructure elements of the Transition Plan will take more time, which is why there is a prioritized list of public facilities and public right of way infrastructure for the City to begin implementing via the proposed schedule of improvements. The schedule is based on a goal to have existing buildings, existing parks, and existing sidewalks/pathways transitioned to ADA compliance over the next 20 years. New facilities should be ADA-compliant when constructed so they do not require retrofits in the future unless ADA requirements change.

Projects Focus

Public Buildings/Facilities. The focus of upgrading public buildings and facilities, such as public parks, to comply with ADA is what is called the Primary Function Area (PFA, see Figure 2). The PFA is an area of a building or facility containing a major public activity for which the building or facility is intended.

Within the PFA, ADA defines the following priority order:

- **Priority 1: Approach & Entrance**—Parking, exterior route, curb ramps, building ramps, entrance.
- **Priority 2: Access to Goods & Services**—Interior access routes and ramps, elevators, signs, doors, room and spaces, service counters.
- **Priority 3: Toilet Rooms**—Accessible route, signs, entrance, sinks, lavatory, soap dispensers & hand dryers, stalls.
- **Priority 4: Additional Access**—Drinking fountains, public telephones, fire alarm systems.

This is how the City should prioritize building and facility upgrades when making alterations to a facility. A recent example of this is the exterior upgrades to the Community/Senior Center, which addressed Priority 1.

Public Right of Way. The intended focus of a Transition Plan is to identify how existing sidewalks, curb ramps, pedestrian push buttons, and shared use pathways, are upgraded for ADA compliance. In McCall, the curb ramps are the primary area of need for upgrades, as well as some sidewalk repairs.

Because not every street within the City of McCall’s jurisdiction has sidewalks, there are some routes where the City may choose to install sidewalks and curb ramps to make different destinations within the City accessible. ITD’s State Highway 55 is the public’s highest priority for filling sidewalk gaps and the City may use that input to continue to work with ITD to identify solutions to filling sidewalks gaps on the highway.

Figure 1: Creating an Accessible City

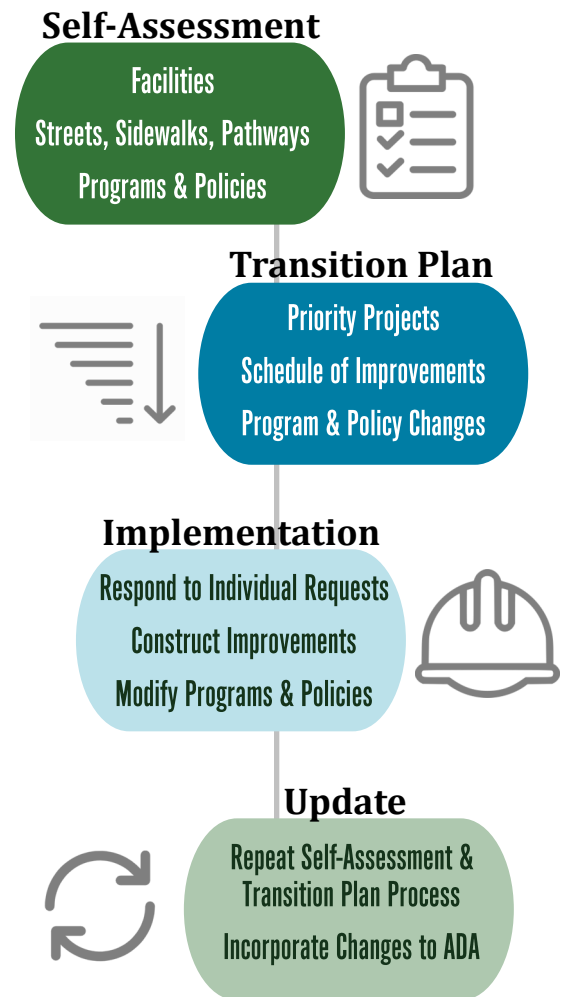
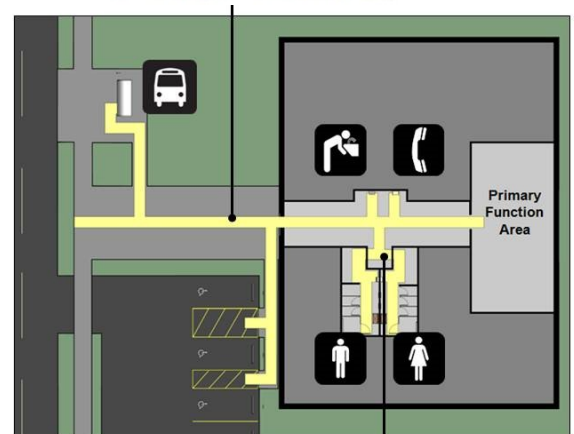


Figure 2: Primary Function Area

The accessible path of travel extends from the altered primary function area to site arrival points (public sidewalks, parking, passenger loading zones, public transit stops located on the site).



The path of travel also includes an accessible restroom (for each sex unless only unisex restrooms are provided), telephone, and drinking fountain serving the primary function area, where such elements are provided.



2. The People & Plans of McCall

Demographics. Data provided by the United States Census indicates 1 in 12 (or 284) of McCall’s residents reports having some type of disability. Figure 3 at right shows how that compares to Valley County, Idaho, and the United States. Even though that figure is lower in McCall than in other larger geographies, it does not diminish the importance of it.

Additional data on McCall residents reporting a disability are found in Figure 4. Some notable features of that data include:

- Nearly 2 out of 3 residents reporting a disability are female.
- 73% of those reporting a disability are aged 35 to 64, an overrepresentation of that age cohort which comprises 40% of McCall’s population.
- 45% of those reporting a disability have hearing difficulty.
- 32% of those reporting a disability have cognitive difficulty.
- 30% of those reporting a disability have vision difficulty.

Of particular note is the dataset showing no one in McCall reporting a self care difficulty. This likely reveals the limitations of having a small dataset for a city the size of McCall. Census data for the 5-year period ending in 2012, for example, showed 23 people in McCall having a self care difficulty. It is unlikely that everyone in that cohort is somehow no longer living in the City and that no one has moved to McCall or developed a self care difficulty since 2012. The 2020 data for Valley County shows 117 people reporting a self care difficulty. Approximately 1 in 5 of Valley County residents reporting a disability live in McCall, so it would be reasonable to assume similar percentage of the county’s total of those reporting a self care difficulty resides in McCall.

Figure 3: Percent of Population with a Disability

Geography	% of Population with a Disability
United States	12.7%
Idaho	13.5%
Valley County	13.4%
McCall	8.2%

Source: US Census, American Community Survey, 2020 5-year estimates, Table S1810

Figure 4: Census Data for People with Disabilities in McCall

	People Reporting a Disability	% of Total Population	% of People Reporting a Disability
Population	284	8.2%	-
Male	105	3.0%	37%
Female	179	5.2%	63%
17 & under	0	0.0%	0%
18 - 34 years	44	1.3%	16%
35 to 64 years	207	6.0%	73%
65 to 74 years	0	0.0%	0%
75 years and over	33	1.0%	12%

Reported Difficulty	Total	% of Total Disabled Population
Hearing	127	45%
Vision	85	30%
Cognitive	91	32%
Ambulatory	59	21%
Self Care	0	0%
Independent Living	33	12%

Source: US Census, American Community Survey, 2020 5-year estimates, Table S1810
 Note: Figures may not equal 100% due to people reporting more than one difficulty.



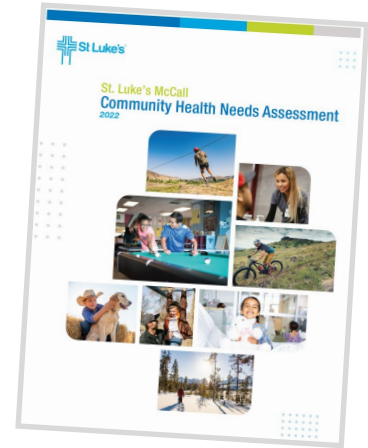
Existing Plans. The Transition Plan and Self Assessment is intended to serve as more than a document on how to meet federal requirements. Various other City and partner agency plans point toward the desire to make the City’s facilities and streets accessible to all. The full Transition Plan will include a summary of key City plans that include some level of support for increased accessibility.

Figure 5 below is a sampling of what the City’s Comprehensive Plan—*McCall in Motion*—includes as it pertains to themes of accessibility. Additionally, efforts such as St. Luke’s Community Health Needs Assessment identifies accessibility and walkability as an attribute of a community that desires to improve physical and mental health of its citizens.

Ongoing efforts, including the Parks, Recreation & Open Space Plan (PROS) incorporated questions in the survey and focus groups to identifying any barriers in accessing existing park facilities.

A goal for future plans, and even decisions such as development approval, could be to include specific sections on how the effort at-hand addresses the accessibility needs of McCall’s residents and its visitors.

Additionally, the City is recommended to incorporate requirements in future efforts, such as consultant contracts, to ensure City plans are formatted with features such as alt-text so they are more easily-readable by people with vision disabilities.



“Communities that work to develop easily accessible, reliable, and varied forms of transportation, including safe options for walking and biking, help boost both physical and mental health of community members as well as reduce air pollution.”

- St. Luke’s McCall 2022 Community Health Needs Assessment.

Figure 5: McCall in Motion Accessibility Themes

Key accessibility themes identified in *McCall in Motion*

Plan Vision	Our Economy
Encourage walking, biking, and recreational activities through an easily accessible and cohesive transportation system and pathway network. (Page 45)	Advocate for the health and wellness of residents through continued, enhanced, and expanded access to healthcare, nutritious food, and active living. (page 43)
Commit to walking, biking, transit, and new types of streets to improve resident and visitor mobility.	Policy 1.6 Continue to provide access to materials and programming from the Public Library for those who are home-bound or otherwise unable to move freely about the community. (page 132)
Our Character	Our Connections
Enhance and protect public access to nature, including Payette Lake and River, the downtown waterfront, parks, and green space. (page 41)	Goal 1: Foster a transportation system for current and future year-round needs that is safe, convenient, accessible, economical, and consistent with McCall’s character. (page 134)
Our Character, Enhance and protect public access to nature, including Payette Lake and River, the downtown waterfront, parks, and green space. (page 41)	Goal 2: Ensure critical framework streets provide safe access and circulation for all modes of travel the City, while establishing a sense of place. (page 136)
Goal 9: Develop accessible community gathering places that encourage interaction and provide places for people of all ages to visit and relax. (page 111)	Policy 2.4 Address motorized and non-motorized uses of the lake and points of access to the lake. (page 143)
Goal 4: Protect and enhance public access along Payette Lake and the character of the shoreline. (page 111)	



3. Input from the People of McCall

A requirement for Transition Plans is that public entities like the City of McCall provide an opportunity for people with disabilities and other interested individuals or organizations to review and comment on the self-evaluation and transition plan.

Recognizing the challenges in providing outreach to people with disabilities in a small city like McCall, the ACCESS McCall effort utilized a multi-pronged approach to gather this input. Figure 6 summarizes the different methods used to collect input.

This comprehensive approach included traditional public meetings (listening sessions) and online surveys to gather input. Additional opportunities for input were provided through citizens who serve on the City's boards and committees (Figure 7), as well as outreach to individual stakeholders.

The City promoted the survey and listening sessions through its Facebook and Instagram accounts. These posts were shared by other City departments with social media accounts, including the Police Department, Library, and Parks and Recreation.

The first round of input occurred from August to October 2022 to gather information and input on priorities and identification of specific barriers people are experiencing from both a public facilities and infrastructure standpoint, as well as with any City-led programs. In all, a total of 40 individuals provided input via the online survey and listening sessions. This include five stakeholder interviews.

Incorporating Input into the Recommendations Process. The input gained from the outreach is used in combination with the detailed data collection of facilities and interviews with City departments to develop the recommendations contained in Access McCall (*forthcoming*). It was important to involve the end users in the process to generate priorities and solutions to ensure the best use of resources in becoming more accessible.

This input is also critical in ensuring the recommendations in Access McCall are defensible in the event of any legal claims arising from how the City implements the Plan. This is because a primary purpose of the Transition Plan component of Access McCall is identifying priorities and a schedule to address those priorities. High priority projects, identified through the combination of input and technical analysis, are likely to be addressed first while lower priorities may take longer to correct.

For example, if the City is subject to a complaint regarding a public restroom with inaccessible features the City has yet to address, the reasons for it being inaccessible are not due to a failure to recognize it as a need. Rather, that particular restroom may not have been identified as a top priority through the input and technical analysis, as well as other factors. The City may wish, as a result of a complaint, to move that restroom up in its priority to address an individual's need, which is very much in the spirit of ADA.

Figure 6: Public Input Opportunities for ACCESS McCall

Opportunities for Input

Listening Sessions - Listening sessions on October 6 and 7, 2022, provided three opportunities for people interested in the plan to talk with the project's consultants about their own experience with access in and around McCall.

Online Survey - The online survey was live beginning in August 2022 through the October listening sessions. 20 people completed the survey and those who provided their email address were providing additional announcements on the plan's progress throughout the effort.

Promotion through Social Media Outlets - The City's Communications Department promoted the online survey and listening sessions through its social media channels.

Presentation to McCall Boards & Committees - An overview of the ACCESS McCall plan goals and process was provided on the publicly-noticed agendas for six of the City's Boards and Committees, including City Council.

Stakeholder Outreach - Organizations who have a specific interest or unique perspective on the needs of people with disabilities were identified by the City staff and consultant and provided opportunities for one-on-one interviews to provide input on the plan.

Figure 7: List of Presentations to McCall Boards & Committees

Boards & Committees

The following City Boards and Committees received a presentation on ACCESS McCall on the dates noted for each. All presentations were publicly-noticed as part of the agenda.

- **City Council**, October 6, 2022, December 16, 2022
- **Planning & Zoning Commission**, September 6, 2022
- **Golf Course Advisory Committee**, October 12, 2022
- **Library Board of Trustees**, September 12, 2022
- **Parks & Recreation Advisory Committee**, October 19, 2022
- **Redevelopment Agency Board**, August 16, 2022



4. Public Facilities Recommendations

There were 10 separate public facilities, as well 12 public parks, inventoried as part of the facilities review. Through evaluation of public use, public input, and upgrades of significance, three top priority projects were identified for the City to pursue in implementing the Transition Plan. These three priorities—Senior/Community Center, Public Boat Facilities, and the Central Idaho Historical Museum—are profiled in more detail in this section.

All other facilities are summarized in a master table at the end of this section. The City of McCall is in the process of conducting major the Library, therefore it is not included in the summary tables. Additional upgrades planned for the Golf Course Clubhouse are included in the summary tables for illustrative purposes. The project is designed and awaiting budget authorization.

As noted earlier, the City may pursue upgrades to public facilities through a variety of methods. Major upgrades to access routes, interior corridors, and toilet rooms will require architecture and engineering services and are likely to be accomplished through individual project efforts. These upgrades likely require construction of ramps, paving of access routes, or reconfiguration of toilet room stalls.

Minor upgrades may be addressed through an annual budget allocation that could cover multiple facilities and make similar upgrades (e.g. toilet room grab bars and other easily-adjustable fixtures).

ADA compliance upgrades to historical facilities are not always required if they impact the historical significance of the facility. The City should design these features in ways integrate upgrades into the design vernacular of facility.

NOTE: Project identification and upgrades assessment are not intended to be scoping documents. They are for planning purposes only. Individual projects must be reviewed, scoped, and engineered when the design process begins.

Legend

- **Major Upgrade:** Requires notable structural work, including ramps, walkways, and interior modifications. Likely requires a dedicated project.
- ◐ **Minor Upgrade:** Requires notable upgrades to fixtures and other features. May be incorporated into annual upgrades
- **No Upgrade Identified**
- ⦿ **See Note for Special Circumstances**

Priority Project #1 Community/Senior Center

The Community/Senior Center is identified as the highest priority for existing facilities due to its central location, public use, and services to individuals who have or are more likely to have disabilities.

Recent upgrades to the drive access and parking area addressed some on-site accessibility needs under Priority 1: Approach and Entrance. Additional upgrades to the site are recommended to connect the Center to the crosswalk at 1st and Idaho, as well as to the shared use pathway. This will allow access to the site via active transportation modes.

Interior accessibility can be achieved through minor upgrades to relocate or delineate protruding objects, adding signage, and modifying toilet room fixtures.

Estimated Cost: \$55,000 to \$70,000



Priorities	Upgrade	Note
1. Approach & Entrance	●	Sidewalk connection to pathway & intersection.
2. Access to Goods/Services	◐	Protruding objects on interior routes, signage, door thresholds, clear space around controls.
3. Toilet Rooms	◐	Signage, grab bar modifications, dispensers
4. Additional Access	○	None identified.



Priority Project #2
Boat Ramp & Toilet Rooms

The City has obtained a grant from Idaho Parks and Recreation to make substantial upgrades to the boat ramp area, including upgrades to the docks to improve access.

Additional improvements include upgrading the Pedestrian Access Route (PAR) for the link between the sidewalk and walking lane on Lake Street. This includes modifying the drainage grates, if they remain in the PAR, to an accessible design that allows people who use wheelchairs and other mobility devices to safely pass over them or avoid them.

Additional minor upgrades are needed to the restroom facilities and changing room at the facility’s parking lot.

Estimate Cost: \$40,000 to \$60,000
(in addition to planned \$220,000 upgrade)



Priorities	Upgrade	Note
1. Approach & Entrance	●	Upgrade dock ramp slopes & transitions, modify PAR across boat ramp driveway, upgrade drainage grates for compliance, upgrade accessible parking.
2. Access to Goods/Services	◐	Upgrade bench seat in changing room.
3. Toilet Rooms	◐	Signage, excess pressure required to use sinks/ toilets
4. Additional Access	◐	Drinking fountain modifications.

Priority Project #3
Central ID Historical Museum

Upgrades to historical facilities are challenging. ADA requires comparable access to first floor spaces but does not require upgrades that impact the historical nature of the facility. Design should be done in a way that maximizes the experience people with disabilities.

Priority 1– Approach and Entrance needs include improved designation of accessible parking, upgrades to ramps that access buildings to include a firm and stable surface (Fire Warden’s and Bunkhouse), and filling discontinuities in walkways around the site, including paving between the Warden and Bunkhouse buildings.

More substantial upgrades are needed to provide an accessible toilet room for men.

Any improvements deemed to upset historical significance, therefore not subject to compliance upgrades, should be documented as project is designed.

Estimated Cost: \$50,000 to \$70,000



Priorities	Upgrade	Note
1. Approach & Entrance	●	Parking space upgrade, replace building ramps, fill in gaps in walkway, resurface walk areas.
2. Access to Goods/Services	◐	(Upgrades could impact historical significance.) Protruding objects on interior routes, floor surface, door handle upgrades.
3. Toilet Rooms	◐	Staff configuration (men’s), signage, grab bar modifications.
4. Additional Access	○	None identified.



Figure 8: Facilities Inventory and Priorities

Facility	Priority 1: Approach & Entrance	Priority 2: Access to Goods/Services	Priority 3: Toilet Rooms	Priority 4: Additional Access
Airport 336 Deinhard Lane, Unit 100/101 Overall Priority: Low Schedule: Long-range	● Door thresholds	● Protruding objects, signage, door clearance & handles	● Toilet placement, clear width, operable parts	○ None
Notes: Limited public use. Bathroom upgrades recommended as part of major alteration or by individual request.				
City Hall 216 E. Park Street Overall Priority: Medium Schedule: Short/Medium-range	● Ramp (see notes), door thresholds, handrails, Accessible van space, surface discontinuities	● Protruding objects, signage, door clearance & handles, controls, counter space	● Door width, toilet placement, clear space/width, operable parts (see notes)	○ None
Notes: Remedy surface discontinuities in exterior access routes (sidewalk heaves) as part of a short-term project; consider combining with area sidewalk maintenance. Other needs require substantial structural alterations. Top floor access ramp has compliance needs (slopes) but major public access is to basement for public meetings. Upgrade ramp with major alteration to building. City may offer alternative meeting space or accommodation of individuals curbside or in parking lot if requested due to ramp access needs. Bottom floor restrooms require major structural alteration. Upgrade top floor restrooms to improve accessibility and ensure access is provided to first floor restrooms when bottom floor is open for public use.				
Golf Course 925 Fairway Drive Overall Priority: Medium Schedule: Medium-range	● Van parking access aisle, handrail upgrades, signage, door clearance	● Counter height and depth, access to floors other than main floor	● Clear width, handle pressure, sink height, toilet location, signage	○ None
Notes: Exterior access route upgrades are planned and designed. Priority and schedule reflect other needs. Upgrade accessible van parking space with restriping or resurfacing project. Make other structural upgrades as part of a major alteration to the interior access routes and restrooms. If golf course pro shop counter height presents a barrier, offer auxiliary service to patrons. Consider				
Library 218 E. Park Street Overall Priority: High Schedule: In progress	○ See Notes	○ See Notes	○ See Notes	○ See Notes
Notes: New facility under construction. Future public use of existing library TBD; evaluate needs with future alterations to existing library building based on anticipated use.				
Police Station (leased facility) 550 E. Deinhard Lane	● Van access, access ramp slope, door handle	● Protruding objects, counter height	○ None	● Public telephone height/clearance
Notes: Inform Valley County of findings. Provide auxiliary services if requested.				
Public Works Building 815 N. Sampson Trail Overall Priority: Low Schedule: Long-range	● Inaccessible main entrance, van access, door clearance	● Access route width, protruding objects, door threshold, signage, door handles	● Clearance widths for doors & fixtures. sink height, operable parts	○ None
Notes: Limited public use. Offer auxiliary services for people who cannot access through main door. Upgrade with major alteration.				



Figure 8: Facilities Inventory and Priorities, continued

DRAFT

Facility	Priority 1: Approach & Entrance	Priority 2: Access to Goods & Services	Priority 3: Toilet Rooms	Priority 4: Additional Access
Primary Parks				
Art Roberts Parks 327 E. Lake Street Overall Priority: Low Schedule: Long-range	● Access route to waterfront	○ None.	● Toilet placement, clear width, operable parts	○ None.
Notes: Access route to waterfront has excessive running slope on the grade. Other nearby waterfront facilities provide a comparable experience and access. Sign ramp as having excessive slope. Future alterations may provide a compliant ramp or alternate route from along waterfront from Legacy Park.				
Brown Park 1500 E. Lake Street Overall Priority: Medium Schedule: Short-range	○ None.	◐ Install accessible picnic table and paved pad	◐ See Notes	◐ See Notes
Notes: Upgrade a picnic table to provide for access to a paved pad and compliant table. Priority 3 Toilet Rooms and Priority 4 are scheduled for upgrades as part of Phase II of park upgrades completed in 2022.				
Gold Glove Park/Sports Complex 720 Fairway Drive Overall Priority: Medium Schedule: Short/medium-range	● Access route from parking to bleachers, accessible parking stalls, accessible playground	○ None.	◐ Fixture upgrades, doorway slope	◐ Access route to drinking fountain
Notes: Accessible routes needed to seating areas, playground, and drinking fountain; can be firm and stable surface other than pavement. Consider accessibility upgrades to playground equipment as part of PROS Plan recommendations.				
Harshman Skate Park 128 Idaho Street Overall Priority: Medium Schedule: Short-range	◐ Surface discontinuities, signage height	○ None.	◐ Fixture upgrades	○ None.
Notes: Address surface discontinuities with other maintenance projects. Upgrade toilet room fixtures as part of overall effort on non-structural restroom upgrades.				
Legacy Park 1120 E. Lake Street Overall Priority: Medium Schedule: Short-range	◐ Address dock access ramp transitions	◐ See Notes.	◐ Door thresholds, door pulls, fixture upgrades	○ None.
Notes: Dock access ramp transition can be remedied by minor project. Consider a mesh walkway mat to provide beach access from walkway.				
Rotary Park 1120 E. Lake Street Overall Priority: Medium Schedule: Medium-range	● Needs firm/stable walking surface, accessible playground equipment	○ None.	◐ Door thresholds, door pulls, fixture upgrades, surface discontinuities	○ None.
Notes: Upgrade walking surface and correct surface discontinuities. Upgrade toilet room fixtures as part of overall effort on non-structural restroom upgrades.				



Figure 8: Facilities Inventory and Priorities, continued

DRAFT

Facility	Notes
<p>Other Parks: Parks listed in this table are either alongside existing sidewalks and offer only pedestrian access routes or are located in a natural setting with primitive facilities. They are low priority projects due to this status (with the exception of Riverfront Park). Future upgrades to parks in natural settings should include firm and stable access routes, a comparable experience, and other accessible features related the addition of restrooms and other facilities. Final results of the PROS Plan may determine other upgrade features and priority of constructing accessible routes. The City should address individual requests for access or auxiliary services in providing access to parks in natural settings.</p>	
<p>Centennial Plaza 905 N. 3rd Street</p>	<p>Install a detectable edge along the base of the 100-year/Centennial informational placard, as it constitutes a protruding object.</p>
<p>Veteran’s Memorial Community Park 900 N. 3rd Street</p>	<p>Address surface discontinuities in brick pavers.</p>
<p>Disc Golf Course Nature Area</p>	<p>There are no ADA requirements that address disc golf in a natural setting. The City may work with local organizations to identify and pilot adaptive equipment that may allow for people who use mobility devices to more easily navigate the natural terrain.</p>
<p>Riverfront Park 610 S. Mission Street</p>	<p>Medium Priority/Short-Range. Upgrade portable toilet to be an accessible portable toilet. Evaluate in the context of PROS Plan recommendations to upgrade parking and the accessible route to the bridge to be a firm and stable surface (does not have to be paved).</p>
<p>Roosevelt Pocket Park Railroad Street</p>	<p>Consider accessible route from Roosevelt/Lenora intersection as part of intersection upgrades that are part of the public right of way improvements.</p>
<p>Wildhorse Park 708 Thompson Ave</p>	<p>No recommendations.</p>

Bus Shelters: High Priority The City maintains six bus shelters that serve the local bus system. There are two identified needs for minor upgrades for ADA compliant: Correcting surface discontinuities and either moving or lowering trash bins.

1. Surface discontinuities exist at the transition from paved areas to the shelter; most of these transitions can be fixed by beveling the pavement to create no more than a 1/4-inch change in level.

2. Trash bins are a protruding object due to their height. The leading, bottom edge can be lowered to be less than 27 inches, which makes them cane detectable. Some trash bins that are mounted to the inside area of the shelter restrict access to the area alongside the bench that is a dwelling area for people using a wheelchair and waiting for the bus.





DRAFT

5. Public Right of Way Recommendations

The public right of way features that are the focus in the Transition Plan are existing sidewalks, existing curb ramps, and existing pathways. McCall’s sidewalk investments have occurred primarily within the downtown area, Lake Street, Lenora/Wooley, and the sections of SH-55 on Lake/3rd.

The map in Figure 9 below shows the location of existing 75 curb ramps where sidewalks (not pathways) are present. In general, curb ramps and constructed over the past five years are in good shape in terms of surface condition. Older sidewalks and curb ramps are starting to reveal the impact of several winter seasons and have cracks and heaves in them.

Figure 10 at right is a summary of key ramp features and where they are non-compliant. There are 21 ramps identified as high priority with an estimated cost of replacement of approximately \$60,000.

- 21 identified as high priority for rebuild due primarily to a lack of flat landing combined with a ramp cross slope greater than 2%.
- 4 of the 21 High Priority Rebuild ramps also require detectable warning surface upgrades.
- 17 ramps require detectable warning surface that cover the full tread width of the ramp (\$20,000 to \$30,000).
- 14 of the combined 38 ramps identified above are along SH-55, which means funding may be available through ITD or they must be replaced when the street is resurfaced.

Figure 11 is a summary of overall sidewalk condition needs. Surface discontinuities, surface conditions, and vertical obstructions are low cost, high impact improvements. Fixing cross slope and driveway issues is more costly. We are still compiling and mapping the sidewalk data to determine estimates and priority routes.

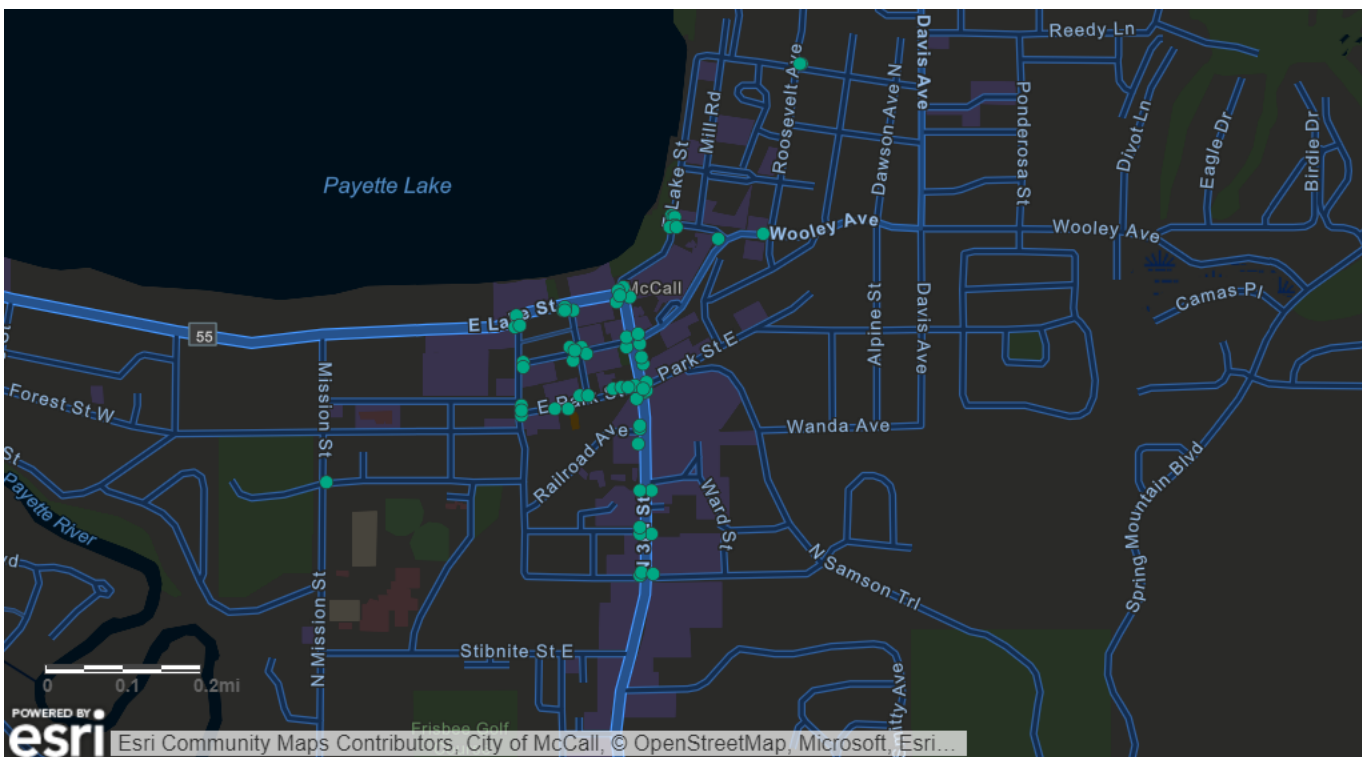
Figure 10: Summary of Key Curb Ramp Needs

Curb Ramp Tallies	
75	Total Curb Ramps
38	Ramps lacking 4’x4’ flat landing
31	Cross slope > 2%
21	Detectable Warning Surface upgrade
16	Running slope > 8.3%
2	< 4 width
21	High Priority Rebuild (~\$60,000)

Figure 11: Summary of Key Sidewalk Needs

Sidewalks Tallies	
1,100	Sidewalk segments in inventory
115	Segments w/severe cross slope
87	Vertical surface discontinuities
33	Segments w/poor surface condition
18	Driveway Crossing Upgrades
8	Vertical obstruction (ie. tree branch)

Figure 9: Map of Sidewalk Curb Ramps in the City of McCall





DRAFT

Shared Use Path Crossings & Edge Treatments

McCall’s extensive pathway system serves as both a recreational pathway and a transportation network. The priority for ADA compliance of the pathway system are upgrading street crossings with Detectable Warning Surfaces (aka truncated domes) and modify ramp running and cross slopes. An additional need for ADA compliance is installing of an edge treatment where the pathway is on the same grade as the roadway so the area where the pathway surface transitions to street is detectable to people with vision disabilities.

Pathway Crossings. The map below shows the locations of where the pathway crossings are in need of upgrades to be compliant. There are 85 total curb ramps (generally two per street crossing) that need these upgrades; 14 of those are along Deinhard Lane, east of SH-55, where the City is already planning to make those upgrades.

The cost to upgrade each ramp could range from \$1,000 to \$4,000 per location. The \$1,000 per ramp cost is where only truncated domes are required and the slopes are otherwise compliant. The \$4,000 cost is for a full rebuild of each corner (at least two per street crossing).

The priority routes or zones are (not including Deinhard east of SH-55):

- Priority 1: Downtown Area & Lenora to Davis (19 ramps/corners)
- Priority 2: School Areas (18 ramps/corners)
- Priority 3: Spring Mountain/Lick Creek (33 ramps/corners)

Each priority phase could range in cost from \$75,000 to \$100,000.

Detectable Edges. McCall’s has approximately 2,000 linear feet of pathways that are immediately adjacent to the street without a landscaped buffer or curb. These are along Lenora/Wooley and Spring Mountain. There is a need to place a detectable edging along these sections so they are recognizable as the edge of the pathway. We are working with the City staff to identify some possible treatments that are both cost effective and easy to remove and store during winter.



Pathway crossings of streets require detectable warnings and other curb ramps features.



Pathways alongside roads with no curbing require some type of detectable edge between the pathway and the street.

Figure 12: Map of Pathway Crossings in Need of Ramp Upgrades

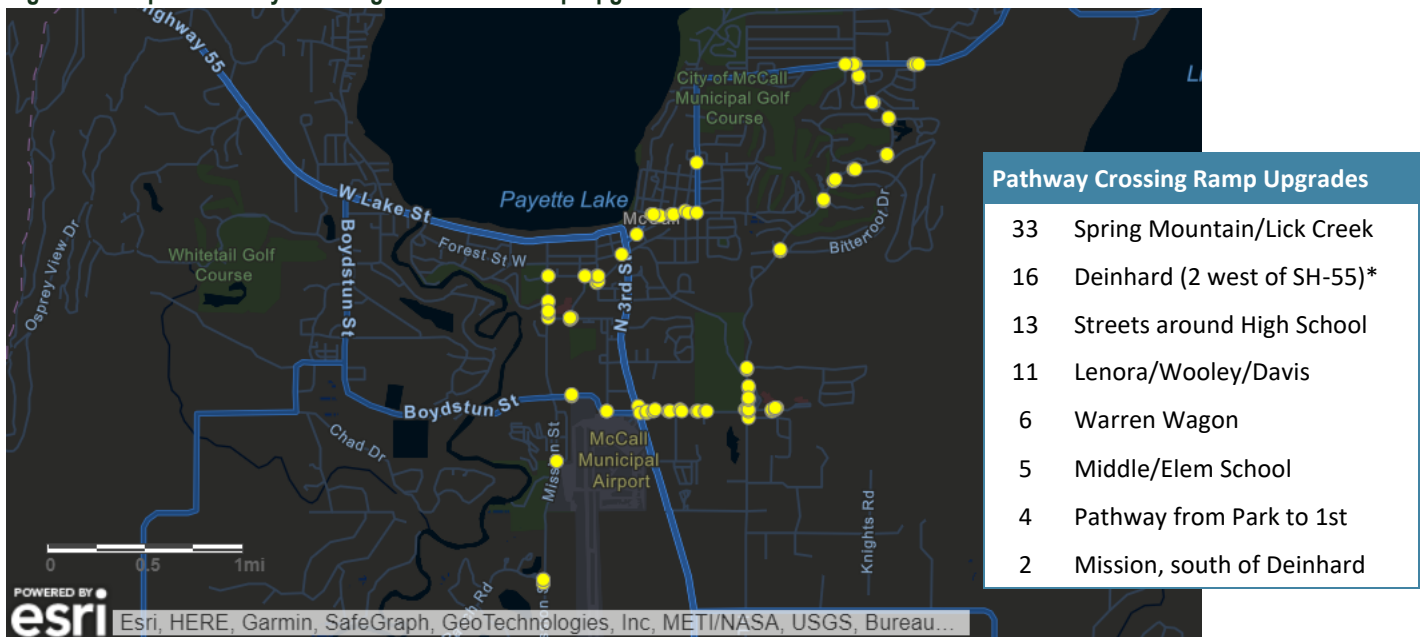




Figure 13: Common ADA Compliance Needs on Curb Ramps and Sidewalks in McCall

Surface Conditions

Harsh winter conditions lead to concrete spalling (top), where the weathering creates a rough surface. Vertical discontinuities (bottom) also occur due to winter weather. The quarter shown in the image indicate the discontinuity of at least an inch, with 1/4-inch being the maximum allowable change in level.



Detectable Warnings (aka Truncated Domes)

Winter weather erodes detectable warnings (top) that not manufactured with cast iron. The City has changed its practices and is using the more durable cast iron pads.

Detectable warnings must cover the full tread width of the ramp. In the example below, the detectable warning should cover the full area where the sidewalk has a flush transition to the street (marked in yellow).



Pedestrian Push Buttons

Push buttons must be accessible from a flat landing area and be at a height between 42 inches and 48 inches. Current push buttons in McCall are on ITD-maintained signals and the City should request these be upgraded for compliance.



Ramp Connections

Every ramp that allows entry to the street at a marked or unmarked crosswalk requires a receiving ramp on the opposite side of the street. In the image below, the ramp crossing on the south side of Lake Street at 2nd Street has no receiving ramp on the opposite side. The solution is to either remove the ramp or construct a receiving ramp on the opposite.





6. Programs & Policies Recommendations

McCall's programs and policies were subject to a review by the project's consultants to determine the degree to which they comply with ADA and how they may be modified to improve accessibility. Ensuring programs and policies do not result in a denial of access to people with disabilities requires consideration of how someone can perform tasks, such as readily obtaining information via the City's website, is provided equal access to City programs, and knows where to find information on how to file a complaint or grievance if they feel they were denied access.

Non-Discrimination & Grievance Policies

The City of McCall has addressed requirements of ADA for developing a formal grievance procedure and related non-discrimination policies to provide expectations to the public on the City's commitment to providing equal access to people with disabilities. Two adopted resolutions—Non-Discrimination Policy and Effective Community Policy—address these commitments. Additionally, the City adopted a Grievance Procedure via resolution to outline how the City will address ADA-related complaints. PDF copies of these policies are accessed via the City's website at: <https://www.mccall.id.us/ADA504>.

- **Recommendation:** Upgrade the Non-Discrimination Policy upon adoption of Access McCall to reference the new Transition Plan.

Communications

The City is working on upgrades to its website to provide better information and access to everyone accessing the site. Part of this upgrade includes an updated website platform that aligns with the Web Content Accessibility Guidelines (WCAG) that identify access needs for people with disabilities. The City has incorporated closed captioning into its online meetings. Additionally, the City is working to streamline processes across City departments to provide consistent content as it pertains to accessibility features such as alt-text on images and accessible documents.

- **Recommendations:** Complete website upgrades, then work with an organization such as Idaho Access Project to review it for any inconsistencies. Incorporate language on alt-text and other accessibility features into contracts where consultants or other firms are documents on behalf of the City.

Programs

The assessment of how well the City's programs guard against discrimination was conducted via interviews with several City of McCall staff, primarily department leaders. Programs may represent several City efforts, such as a reading program at the Library, a public presentation at the airport, and the City's management of construction zones that impact sidewalks. The City's Police Department may encounter an individual whose disability may require them make special accommodations.

In general, the City's department leaders are knowledgeable about accessibility needs of people wishing to access various programs. A key tenet of this is providing for individual accommodation, especially when people address the needs for auxiliary accommodations to access a meeting, a library program, or attend a special event. City sidewalk programs are addressed in the public right of way section.

- **Recommendations:** Purchase two wheelchairs for the City to use to respond to requests for accessibility. Compile a list of sign language interpreters who can serve the needs of people with hearing disabilities; with that, have a laptop computer available for an interpreter to join remotely if the City is not able to secure someone to provide these services onsite.

Policies—City Code & Engineering Standards

The City Code and Engineering Standards were reviewed to identify ways in which it can be amended to better address the needs of people with disabilities. It was also reviewed to identify specific sections of the Code and Standards that could be clarifying to ensure the application of them doesn't inadvertently result in discrimination or the appearance of discrimination. The City's policies that regulate land development are a key component of City Code that can help the City transition its infrastructure and facilities into compliance, as well as provide more concise requirement of new development to ensure access to private businesses is achieved. A detailed table of policy recommendations is included in the full Transition Plan document.

- **Code Recommendations:** Add a definition of "disability" and incorporate ADA-specific language into sections on parking, sidewalks, and requirements for various land use zones. Clarify other elements of City Code to specify what may or may not occur with regard to allowing access to or improving safety for people with disabilities.
- **Standards Recommendations:** The Consultant made several minor recommendations for the City to modifying existing standard drawings, as well as developing (in coordination with statewide efforts) a standard drawing for curb ramps at shared use pathways.



7. Other Recommendations

These recommendations are intended to help the City advance its goals to become more accessible through other program and policy efforts, as well as grant pursuits.

- **Annual ADA Upgrades Budget Allocation:** It is recommended the City establish an annual budget line item intended for use in making upgrades to public facilities and public right of way. This program is intended to address needs that may be addressed across a broad spectrum of City facilities or infrastructure. This may include, for example, non-structural toilet room upgrades to things such as hand rails, sink and soap dispenser heights, and insulation on pipes under sinks. Through this annual allocation, the City can address these needs at several toilet rooms. The same program could be used in another year to upgrade high priority curb ramps. It is recommended this allocation be \$50,000 per year and that it may be combined over two years to help gain economies of scale in the bidding of projects. Projects addressed through this allocation would be in addition to other City funding and grants for larger-scale upgrades, such as building remodels.
- **ADA Coordinator Certification:** The ADA Coordinator Certification Training Program is offered through the University of Missouri's College of Arts and Sciences. The City may consider having its current ADA Coordinator undergo this certification, which consists of 40 hours of trainings (mostly online) to obtain the certification, as well as annual maintenance of the certification through continuing education. The ADA Coordinator may then decide if the certification would be beneficial to other City staff.
- **Sidewalk Fee in Lieu Program & Sidewalk Utility Fee:** Cities in Idaho may assess a fee in lieu of construction of public improvements. For example, the City requires sidewalks be added to streets when individual parcels are developed. In many instances, these sidewalks may be "islands" where full-scale sidewalks may not be completed, or even attainable, for many years. By developing a fee in lieu program for sidewalks, like the City has for parks, funds for the improvements can be put into a pool of funds that the City can use to fill higher priority sidewalk gaps. Payette, Idaho, has begun a sidewalk utility program by which each property owner is assessed an annual utility fee for sidewalk maintenance. This pools funds for a City to upgrade sidewalks where there things like cracks or heaves that create hazards and ADA compliance challenges. Rather than relying on property owners and a reporting system, the City may use the funds to systematically fix sidewalk as well as respond to individual complaints. It may also be used to help consolidate funds for clearing snow from high priority routes.
- **Update Active Transportation Routes:** The City may consider amending its Transportation Master Plan to add routes identifying sidewalk gaps on streets that provide primary routes to access destinations such as downtown and City parks. These routes were identified through the lens of providing access routes that may not have been identified as other high priority pedestrian routes in the existing Transportation Master Plan.

8. Next Steps

The Consultant will embark on the following tasks after receiving direction by the City Council at this work session.

- **Draft & Final Transition Plan:** Develop a full draft Self Assessment and Transition Plan, with more detailed project recommendations and planning-level cost estimates, as well as a schedule for implementation. The draft will be reviewed by City staff and edits. Once adjustments are made the plan is posted to the City's website and those who participated in previous public engagement are given an opportunity to provide comment as part of the adoption process. This would occur in January 2023.
- **Adoption: Upon Council direction at the work session,** we will identify a schedule for adoption to occur through the City's Planning & Zoning Commission, followed by adoption by the City Council. This is expected in January/February 2023.
- **Training:** The Consultant team is tasked with developing a full-day training on the Self Assessment and Transition Plan that showcases the findings of the plan and explores various ADA compliance topics that are relevant to the plan's implementation. It is expected this will occur in Spring once most of the snow is melted from City sidewalks and park facilities.
- **Implementation:** Once adopted, the City should embark on adopting the recommended policy and programming changes within the first year after adoption. The timeline by which recommendations such as an annual budget allocation and individual facility/street upgrades are implemented is subject to other influences and may take longer to implement. Because of this, these improvements will appear in the Transition Plan schedule as occurring in years 1 through 5. The annual budget allocation would be expected earliest in this schedule.
- **Annual Reporting:** The City should develop an annual report on the implementation of its transition plan. This includes a summary of any policy and program changes, as well as a list of public facility and infrastructure improvements.

**McCALL CITY COUNCIL
AGENDA BILL**

216 East Park Street
McCall, Idaho 83638

**Number AB 22-330
Meeting Date December 16, 2022**

AGENDA ITEM INFORMATION				
SUBJECT:		<i>Department Approvals</i>	<i>Initials</i>	<i>Originator or Supporter</i>
<i>Update on Parks, Recreation and Open Space Plan findings</i>		Mayor / Council		
		City Manager		
		Clerk		
		Treasurer		
		Community Development		
		Police Department		
		Public Works		
		Golf Course		
COST IMPACT:	n/a	Parks and Recreation		
FUNDING SOURCE:	n/a	Airport		
		Library		
TIMELINE:	n/a	Information Systems		
		Economic Development		originator
SUMMARY STATEMENT:				
<p>Kristian Kachur with consultant firm Logan Simpson will provide an update on the progress of the McCall Parks, Recreation and Open Space Plan and findings from the public planning workshop held November 16, 2022.</p> <p>A summary of public input collected, and a copy of the public workshop slide deck are attached.</p>				
RECOMMENDED ACTION:				
None – information and discussion only.				
RECORD OF COUNCIL ACTION				
MEETING DATE	ACTION			

OPPORTUNITIES PUBLIC MEETING SUMMARY DRAFT NOVEMBER 18, 2022



The McCall PROS Plan Opportunities Public Meeting was held on November 16, 2022 at the Community/Senior Center from 5:30 pm – 7pm. A hybrid format allowed people to attend in-person or virtually. The workshop included a brief presentation of work to date and the preliminary opportunities (see attached presentation) and then broke into small group discussions. Based on the public’s input to Q1 during the summer 2022 and the existing conditions assessment, preliminary opportunities and conceptual plans were developed for input at this meeting. A recording of the meeting presentation can also be viewed here: https://us06web.zoom.us/rec/share/jtl5KnJSuGdZVFheEktqUKdRjB4WFHlulQ6KTXdOxj_Uq_RPn663c7UPDmD_4WGk.jcCOVGAZNVKS2-BZ

Following the public meeting, a follow up presentation was shared with the Youth Council and Speech Class at McCall/Donnelly High School with about 25 students between the ages of 15 and 18. Similar polls were asked of the students and the results are integrated below.



NOTIFICATIONS

The community was invited to participate in the public meeting through social media posts, newspaper ads in the Star-News, project website updates, e-mail updates to Department and project mailing lists, flyers, Text My Gov updates, and personal invitations. Comments provided in responses to the social media posts are integrated below.

WHERE DO YOU ENVISION NEW PARKS?

DO WE NEED A DOG PARK OR NEW SOCCER FIELDS?

HOW ABOUT COURTS OR A REC CENTER?

SECOND CHANCE! EXPLORE OPPORTUNITIES meeting on the future of Parks, Recreation and open spaces. Parks, pathways & more! Join the conversation!

REGISTER HERE!  SCAN ME
Scan the QR Code using your phone's camera.

**NOVEMBER
16th
5:30 - 7PM**

In-person:
Community Center
701 1st. Street
Virtually:
Via Zoom

 **City of McCall**
IDAHO

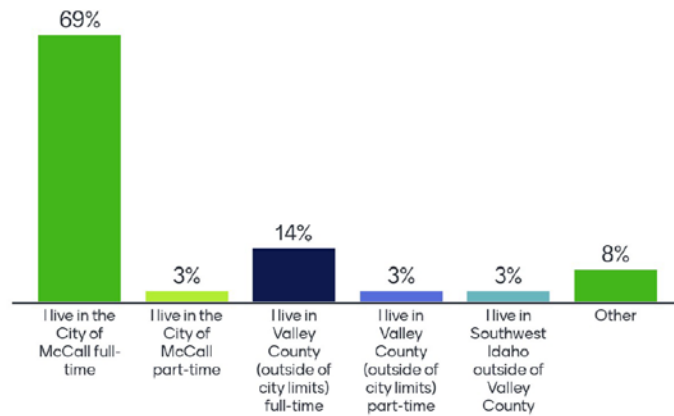
 **PROS PLAN**
PARKS RECREATION & OPEN SPACE
MCCAILL IDAHO

OPPORTUNITIES PUBLIC MEETING SUMMARY

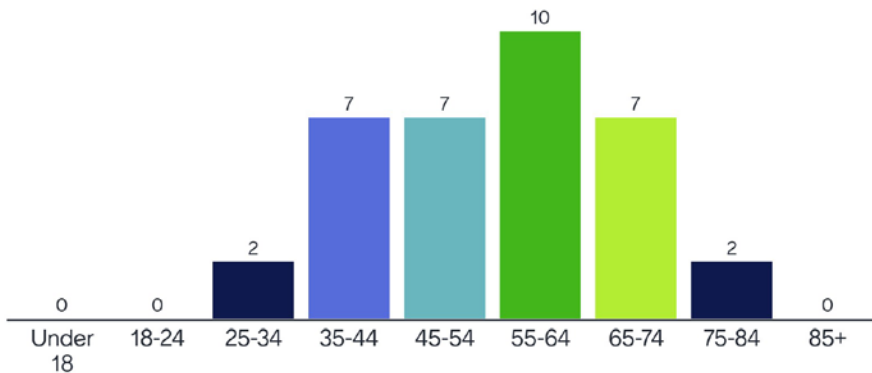
MEETING ATTENDEES

A total of 45 people attended the meeting 18 in-person and 21 virtually through zoom, plus seven staff and consultants. Most attendees were full-time residents of the City of McCall or Valley County and between 35-74 years of age.

Do you live here full-time or part-time?



How old are you?



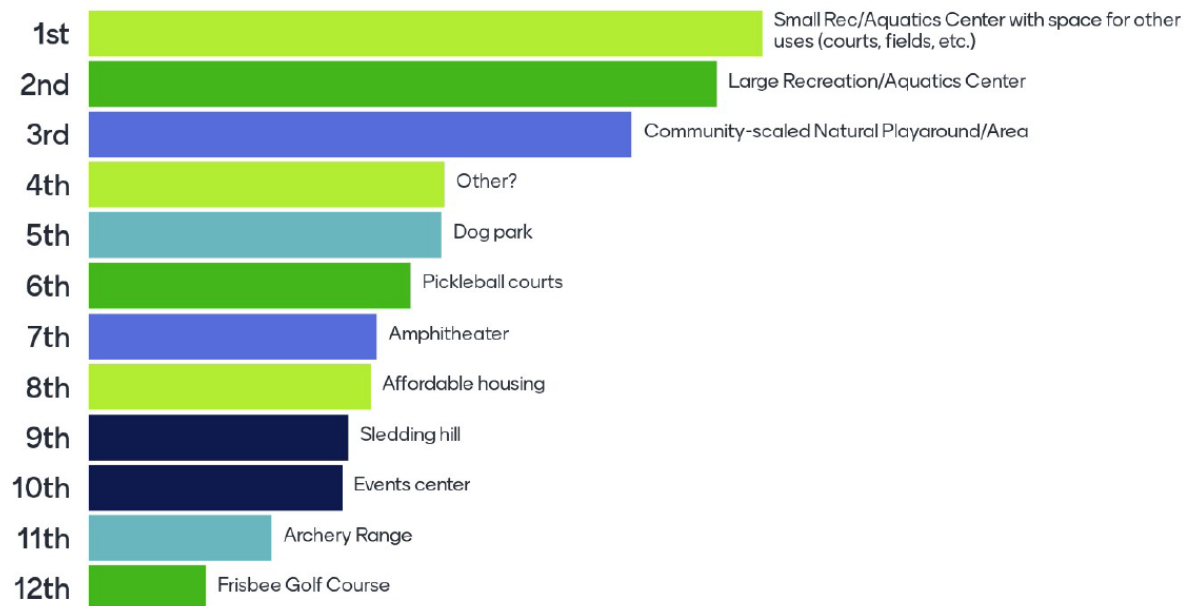
OPPORTUNITIES PUBLIC MEETING SUMMARY

COMMENT SUMMARY

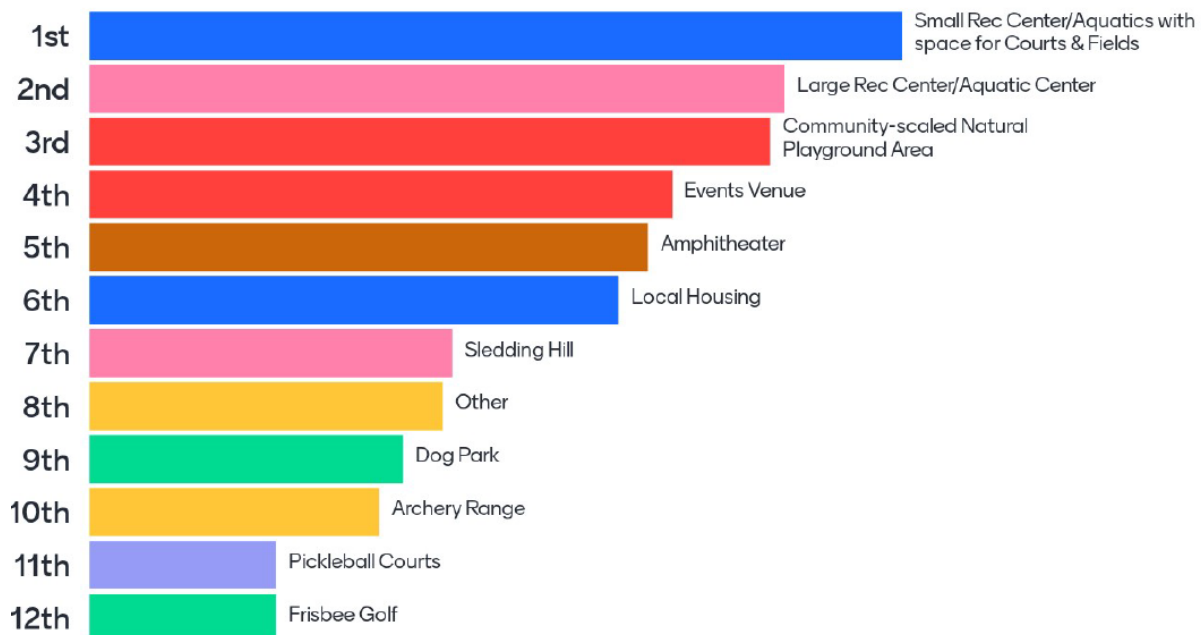
The presentation focused on key opportunity areas, but participants were able to discuss other topics during the virtual breakout groups and on boards at the open house portion of the in-person meeting. Comments from all venues are grouped together by park area and then other topics.

Riverfront Park

Public Meeting Responses (n=33):



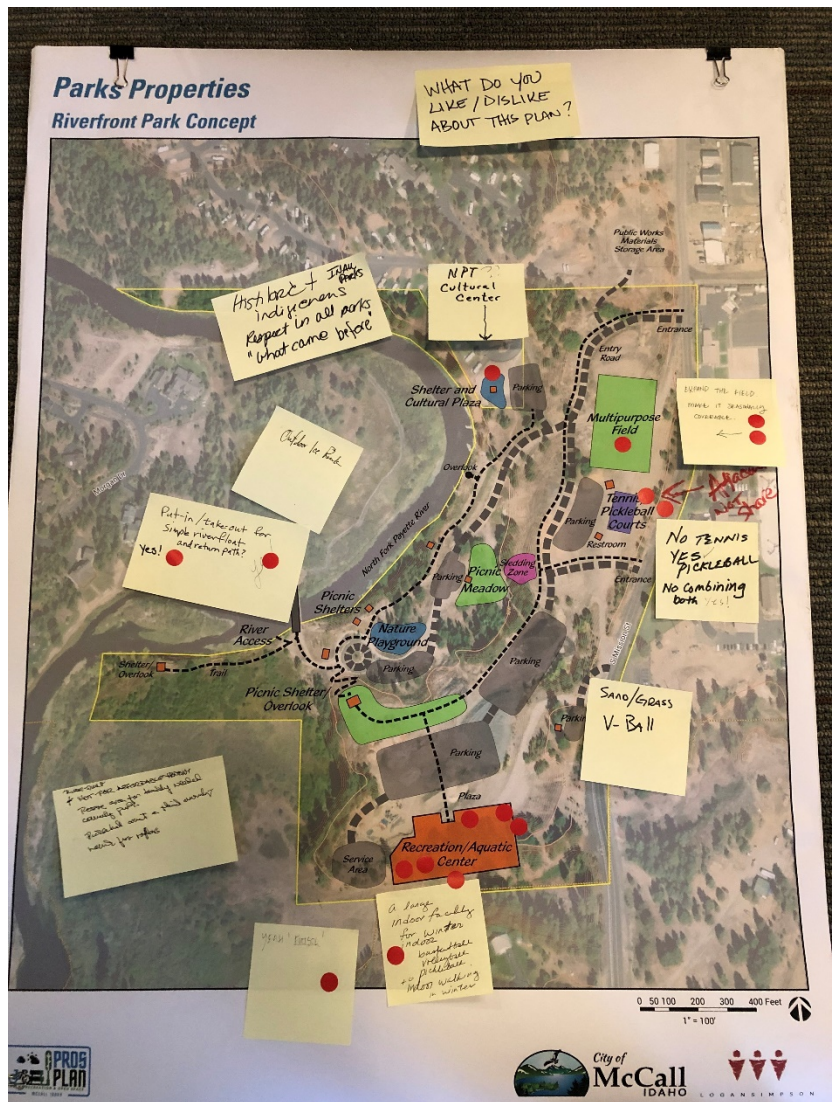
High School Class Responses (n=19):



OPPORTUNITIES PUBLIC MEETING SUMMARY

Other Riverfront Park Comments:

- Also look at: Revelstoke's Recreation Center and Madras Aquatic center (has a Rec District Levy)
- Mini-soccer, futsal
- Launch site for rafters/river float, return path for float (4 dots)
- Surf wave
- Petanque/batchi/bocci ball courts
- Enlarge field and make it seasonally coverable
- Urban agriculture and horticulture
- Indoor recreation/aquatics center (7 dots)
- Warm pool/play area
- Jumptime/gymnastics mat area
- Indoor walking track
- Indoor courts (soccer, volleyball, basketball, pickleball, tennis)
- Rock climbing wall
- Environmental education
- Composting site
- Greenhouse
- Area for activities in the winter because it gets dark early
- Nez Perce Tribe Cultural Center
- Historic and indigenous information on "what came before" (applicable to all parks)
- Outdoor ice rink
- Tennis/pickleball courts should be adjacent to each other not shared
- No tennis, just pickleball
- Sand/grass volleyball
- Not for affordable housing
- Locker rooms
- Random drop in times for kids playing (not just classes)

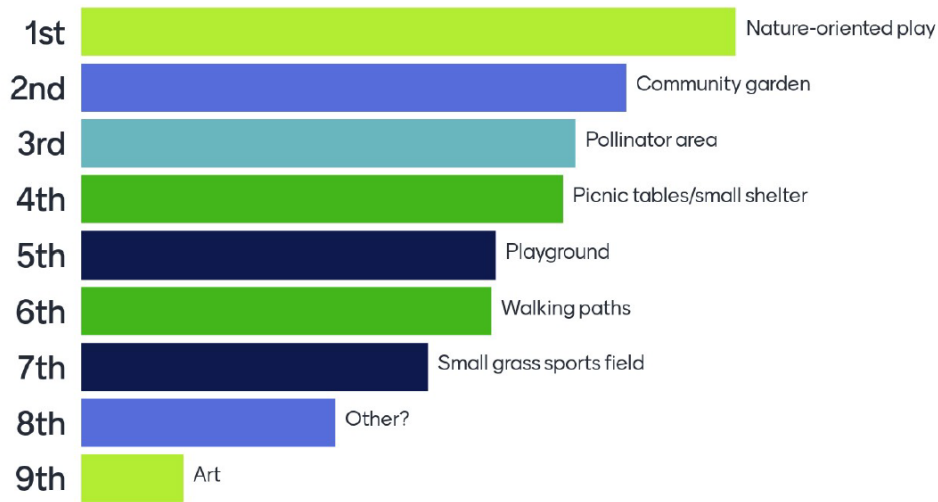


Comments are summarized in the bulleted list.

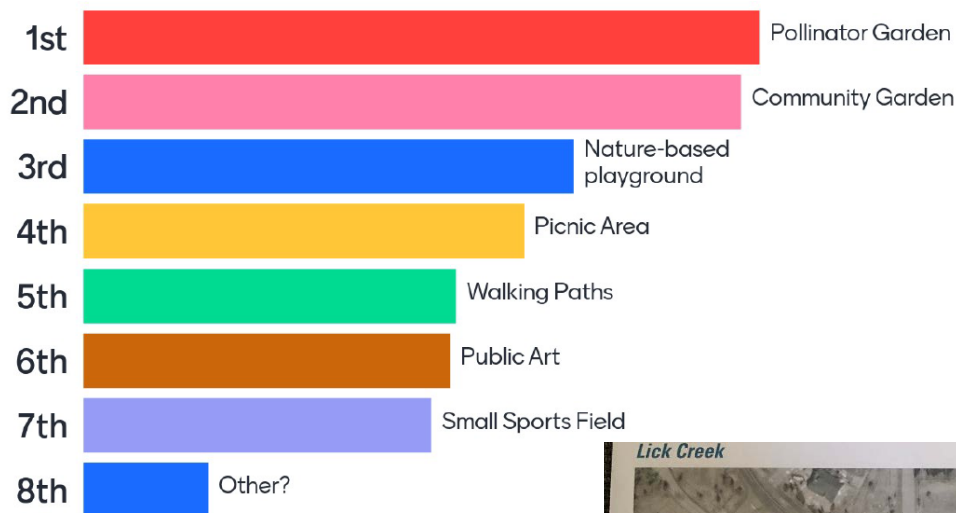
OPPORTUNITIES PUBLIC MEETING SUMMARY

Lick Creek

Public Meeting Responses (n=32):



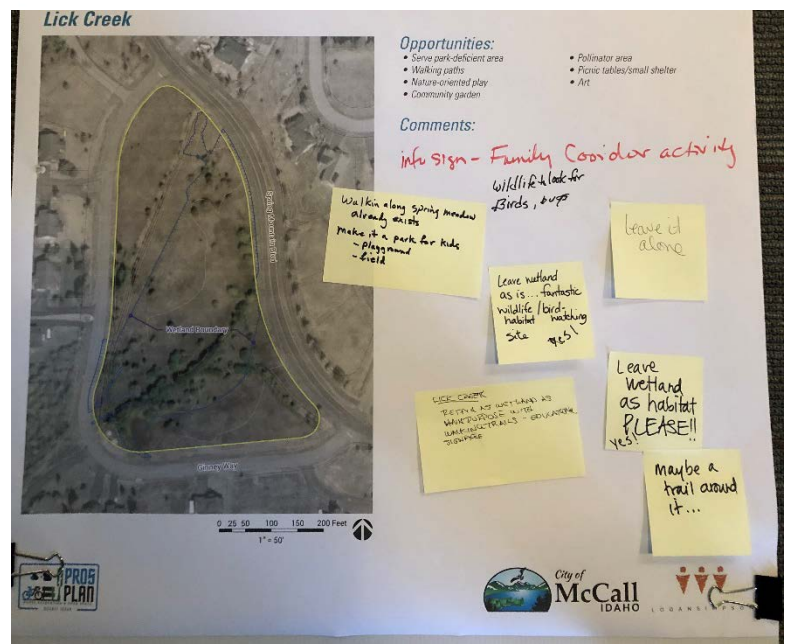
High School Class Responses (n=19):



Other Lick Creek Comments:

- Information sign
- Walking along spring meadow already exists
- Make it a park for kids with playground, fields
- Leave it alone for wildlife habitat/watching for birds, bugs
- Walking trails

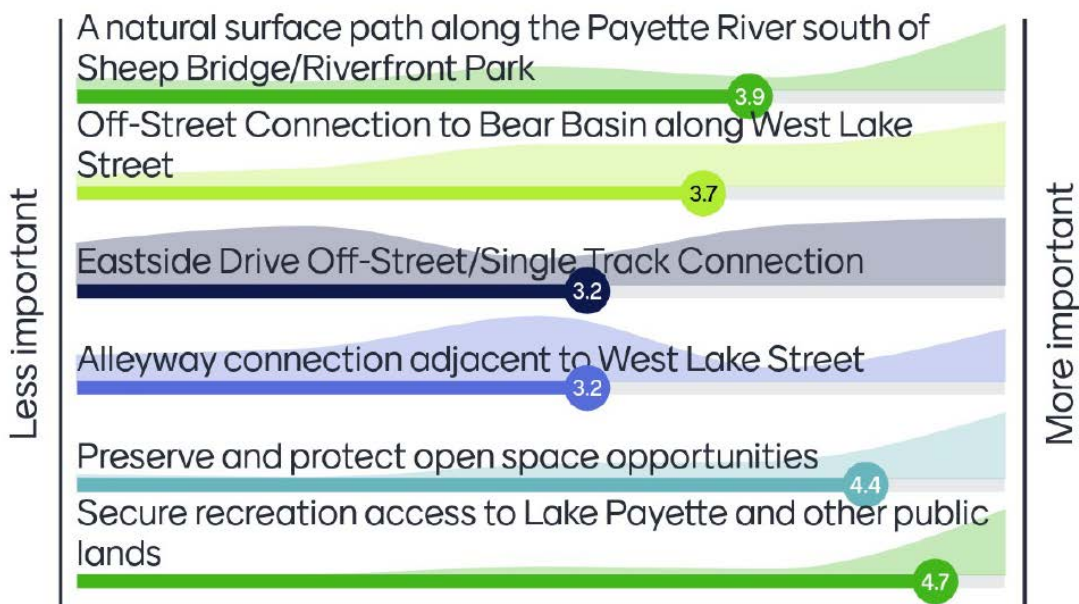
Comments in picture are summarized in the bulleted list.



OPPORTUNITIES PUBLIC MEETING SUMMARY

Pathway/Waterway Opportunities Importance

Public Meeting Responses (n=32):



Other Pathway/Waterway Opportunities Comments:

- Expanded and improved Lake and River access.
- Have a raft launch site at below the dam on the west side of the river in conjunction with the irrigation controller on their property to the South of Shore Lodge employee housing units.
- Prioritize completing some of the more difficult east west and north south pathway connections within town.
- Examples include: Davis Street, Wooley Avenue phase II, Lick Creek Road, and West Lake Street.
- Make path connections to regional network
- Need separated bike path on Boydstun/Dienhard
- Do alleyway path
- Need signage for bike/ped on Forrest
- Need path on Strawberry
- Davis Ave need pedestrian as well as bike lane (shared)
- More sidewalks

OPPORTUNITIES PUBLIC MEETING SUMMARY

Alleyways:

- Undeveloped, city-owned Right-of-Ways near the Lutheran Church that could serve as an alternate pedestrian pathway to W Lake St/Highway 55 in that area
- Alley behind the cafe at Lardo's to the SITPA site. The new entrance to the hospital occupies part of that easement

Art Roberts Park:

- Add long sitting benches
- Connect via Lakefront Broadwalk to Legacy and Brown Park, accessible, stroller friendly (5 dots)
- Create picnic areas (2 dots)

Colorado Street:

- Preserve natural areas indigenous, rewild
- Dog park

Colorado Street:

- Local arboretum
- Keep it natural area

Davis Beach:

- Formalize parking area at Davis Ave
- Preserve neighborhood parking
- Improve Lick Creek access path (drainage)
- Move/bury/partial bury with deck on top water intake building

Disc Golf/Bike Park:

- Flight Path Bike/Jump Park (4 dots)
- Winter groomed bike path -single track
- Pickleball court (1 dot)
- Dog park (1 dot)

Gold Glove Park:

- Outdoor ice rink
- Multi-sport field space instead of baseball

Legacy/Mill Road/North of Marina:

- Swim area/swim lanes are better here than at Rotary
- Non-motorized use launch area (3 dots)
- Dock platforms (1 dot)
- Hill Climb Park – leave it as a green space
- Add picnic tables to Legacy
- Provide break wave to protect swimmers from turbulence, also current lap lanes are being used by kids to be played on (adds wear and tear)

OPPORTUNITIES PUBLIC MEETING SUMMARY

General Comments/Other Topics

- Walkability
 - How reflective are the maps and data of winter conditions in McCall.
 - Liked that we are looking at the need to develop parcels in areas that are not as quickly accessed by those neighborhoods such as Broken Ridge and Lick Creek Meadows.
- Miles of Pathways
 - Include inventory mileage numbers to breakout the different types of pathways (separated, soft surface, bike lanes, etc).
- Compare funding mechanism too from other tourist communities and outside of the US.
- The local pickleball org is building courts, valleycountypickleball.com
- The community would benefit from more facilities with park amenities such as playgrounds, play fields and park like improvements for young families.
- We live in a unique community with ample opportunities for natural play with the State Park, Lake, and both State and National Forest so close to town but more formal park improvements and amenities are needed within City Limits.
- Boat house/event center proposal
- Need field house or sports complex to offset demands on school district facilities.
- Utilize the IDL 80 acres for a mixed-use sports complex with athletic fields, dog walking paths in between and around the facility. Opportunity for a rec center/field house and opportunities for work force housing in conjunction on the same property.
- Need to hear from our youth and what their goals and desires are for recreational and park facilities within the community.
- 501(c)3 foundation to support parks and recreation department capital development needs, not to compete with library
- Acquire/partner to develop the Samson & Deinhard 38-acre parcel for a nature conservancy/natural rewild indigenous area of cultural practices
- Follow up with Activity Barn/Brundage
- YMCA type facility
- Pump track near Lake
- Updated kid friendly skatepark with playground facilities next to it
- McCall Youth Council would like to see indoor spaces to do things after school, such as
- Climbing wall
- Swimming Pool
- Bowling Lanes/Arcade (specifically with blacklights)
- 'Teen Lounge & Café'

OPPORTUNITIES PUBLIC MEETING SUMMARY

Additional facilities suggested by the High School group, included (the larger the word the more people who said the same idea):



ATTACHMENTS

- Powerpoint presentation
- In-person sign in sheet
- Virtual meeting attendance list



Public Workshop - Opportunities

November 16, 2022 @ 5:30pm



City of McCall



LOGANSIMPSON

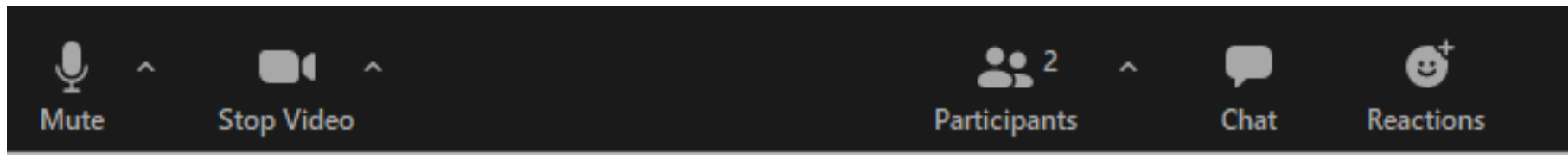
Agenda

- ▶ Project Background (5 min)
- ▶ Needs Assessment -
Inventory Summary, Q1
Highlights, Walkability
analysis (10 min)
- ▶ Preliminary Opportunities
Presentation and Menti Polls
(25 min)
- ▶ Next Steps (5 min)
- ▶ Open House/Breakout
Discussions (up to 45 min)



Meeting Logistics

- Menti Polls: get your phone ready!
- Please keep microphones muted during the presentation and while others are speaking in the breakout rooms
- The presentation section of the meeting and chat will be recorded for future viewing
- Please enter comments in the Chat or on Boards during the breakout groups (post-it notes)
- Be respectful of and learn from other people's ideas
- Be concise and let everyone have a chance to participate
- Materials presented today will be provided online at McCallPROSPlan.com



Meeting Polls

- ▶ MENTI.COM
- ▶ 3168 9820

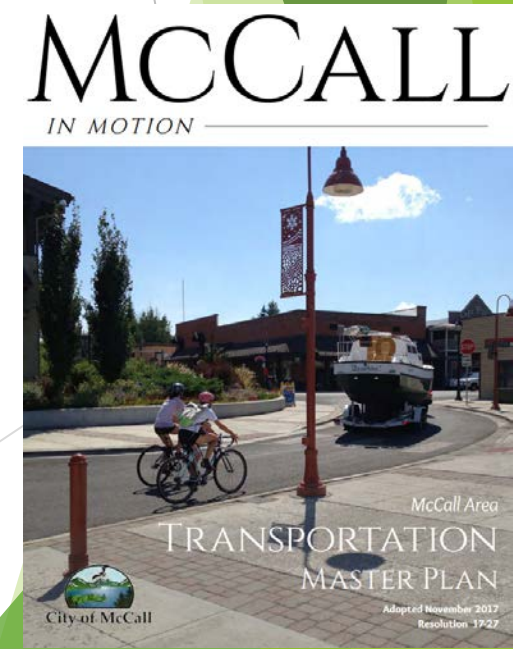
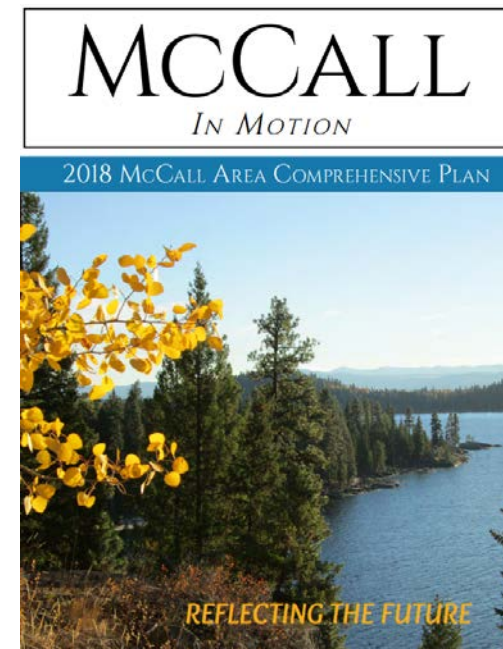
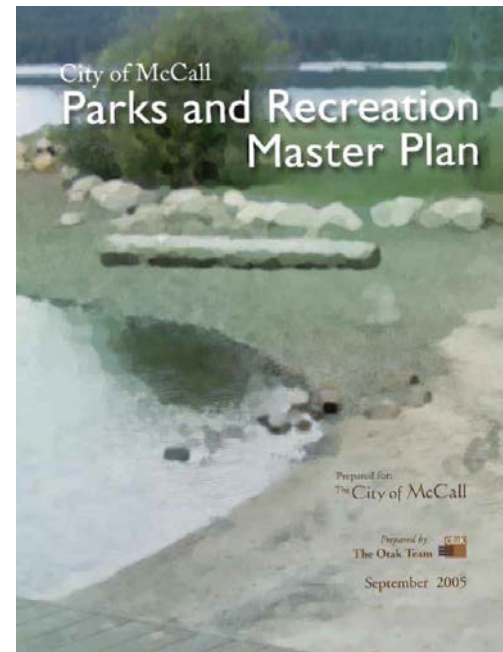


Project Background



Plan Goals

- ▶ Develop a 10-year vision for the Department, updating the 2005 vision and direction
- ▶ Community-driven effort
- ▶ Understand trends and demand changes
- ▶ Chart updated path forward
- ▶ Focused within Impact Area, consideration to public benefits elsewhere
- ▶ Build on past planning efforts



Public Engagement Series Overview

Series #1: May - Jul 2022

Objectives:
Public kickoff
Present opportunities and challenges
Gather input of community needs

Key Activities:
Stakeholder Focus Groups (May)
Public Meeting Virtual (June)
Online questionnaire (June - July)

Questions:
What do you do?
Are there barriers to participating more?
What should be improved?
What is missing in the community?

Series #2: Oct - Dec 2022

Objectives:
Present goals
Present needs assessment summary
Gather input on park improvement and program choices
Collect input on prioritization criteria

Key Activities:
Council Update
Public meeting
Online polls

Questions:
Feedback on opportunities and choices
How should projects be prioritized?

Series #3: Mar - Apr 2023

Objectives:
Review draft plan
Identify implementation priorities

Key Activities:
Online Feedback
Public meeting
Review document online via document review portal

Questions:
Feedback in funding priorities and implementation tools
Do the recommendations represent the community-developed vision?

Needs Assessment Summary



Inventory

- ▶ Developed Parkland: ~50 acres
- ▶ Undeveloped Parkland: 33 acres
- ▶ Parks Maintained Lands: ~ 26 acres (excluding ROWs and not all are slated for developed park)
- ▶ 101.2 miles of pathways
- ▶ Current Level of Service is 13.5 acres/1,000 population

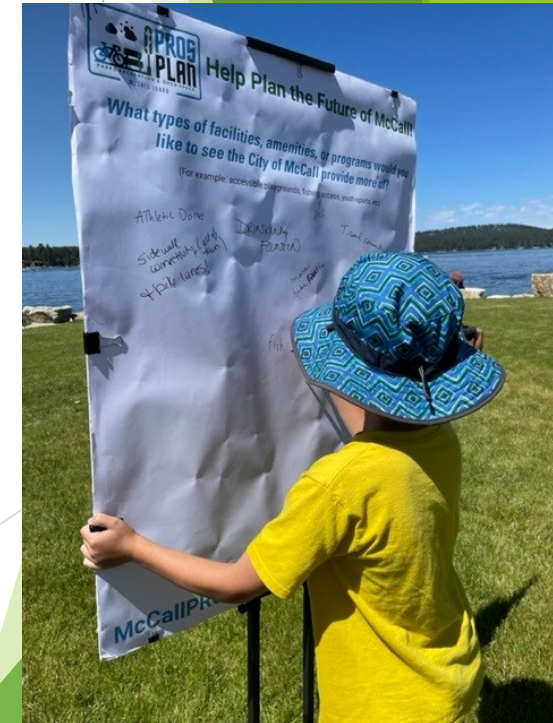


Community Comparisons

Community	Population	Developed Park Acres	Acres per 1,000 population	Staffing FTE	Acres per FTE
McCall, ID	3,871	50	13.5	12.64	4.1
Whitefish, MT	7,714	67	8.7	25.5	2.6
Steamboat Springs, CO	13,048	143	11.0	59.98	2.4
Moab, UT	5,268	35	6.6	26.5	1.3

Q1 Outreach Overview

- Stakeholder interviews
- 14 pop up events at park programs and community events
- 5 Focus Group sessions
- Flyers and business cards distributed around town
- Notifications and promo videos posted on social media
- Newspaper advertisements
- Parks and Recreation Newsletter (June 2022)
- PRAC & Council updates
- Online questionnaire
 - ▶ 178 responses online questionnaire
 - ▶ 85% live in McCall full or part-time
 - ▶ Age groups well-represented
 - ▶ Seasonal workers (2%) and renters (7%) may not be represented well



Participation and Demand - Facilities and Amenities

- ▶ More than 80% use McCall's parks, open space/natural areas, beaches, and bicycling facilities.
- ▶ 50% or more of respondents use McCall's nature trails, outdoor performance/rental spaces, and public dock system. Many other facilities or amenities are used by more than one-third of residents.
- ▶ There is a high demand to provide more facilities of all kinds
- ▶ Higher use levels typically correspond to a high desire for the City to provide more.
- ▶ High demand for some less used facilities, such as indoor and outdoor pools, indoor events and meeting rooms, nature/environmental learning centers, dog parks, splash pad, community gardens, multi-sports fieldhouse, and rock wall and ropes course. Adding these to offerings would likely increase use levels.

Type of Facility/Amenity	Percentage of total respondents who use the facility/amenity	Percentage of total respondents who use a facility/amenity in...		Would you like the CITY to provide more?	
		City of McCall	Other (e.g., Federal Land, Non-profit, etc.)	Yes	No
Developed Parks (i.e., with restrooms, picnic tables)	94.4%	92.7%	60.7%	86.3%	13.7%
Open Spaces/Natural Areas (undeveloped)	94.3%	74.7%	81.5%	82.5%	17.5%
Beaches (Swim)	88.2%	82.6%	64.0%	76.3%	23.8%
Biking (casual/road/gravel)	86.5%	80.9%	68.0%	85.7%	14.3%
Nature trails (walking, running, hiking, etc.)	84.3%	65.7%	71.9%	85.4%	14.6%
Biking (mountain bike)	74.1%	45.5%	61.8%	63.6%	36.4%
Campgrounds	73.1%	16.3%	67.4%	44.5%	55.5%
Kayak, paddleboard, canoe, or float tubing (River)	73.1%	47.2%	61.8%	63.9%	36.1%
Kayak, paddleboard, or canoe (Lake)	72.5%	56.7%	55.6%	67.9%	32.1%
Cross country skiing	66.9%	37.6%	57.9%	57.7%	42.3%
Downhill skiing	64.0%	19.7%	57.9%	30.4%	69.6%
Snowshoeing	64.0%	30.3%	55.6%	45.9%	54.1%
Beaches (Dog beaches)	60.1%	49.4%	38.2%	67.1%	32.9%
Outdoor spaces for performances, education, rentals	60.1%	53.4%	33.1%	71.5%	28.5%
Public Dock Systems	59.5%	55.1%	32.6%	64.2%	35.8%
Bike parks (pump/skills track)	58.4%	48.9%	33.1%	58.9%	41.1%
Fishing (river)	55.0%	32.6%	46.1%	53.7%	46.3%
Park shelters/ pavilions	54.5%	44.4%	33.7%	67.2%	32.8%
Fishing (lake)	51.2%	31.5%	41.0%	44.3%	55.7%
Accessible playground equipment	50.6%	50.0%	7.9%	59.5%	40.5%
Marinas/boat launches	48.3%	44.9%	25.8%	40.5%	59.5%
Indoor pools	47.2%	32.6%	27.5%	80.5%	19.5%
Sledding	47.2%	39.9%	28.7%	45.4%	54.6%
Pools (Indoor)	47.2%	32.0%	25.8%	77.6%	22.4%
Playgrounds	46.6%	46.1%	13.5%	60.7%	39.3%
Indoor event/classroom/meeting room space	44.9%	40.4%	21.3%	63.8%	36.2%

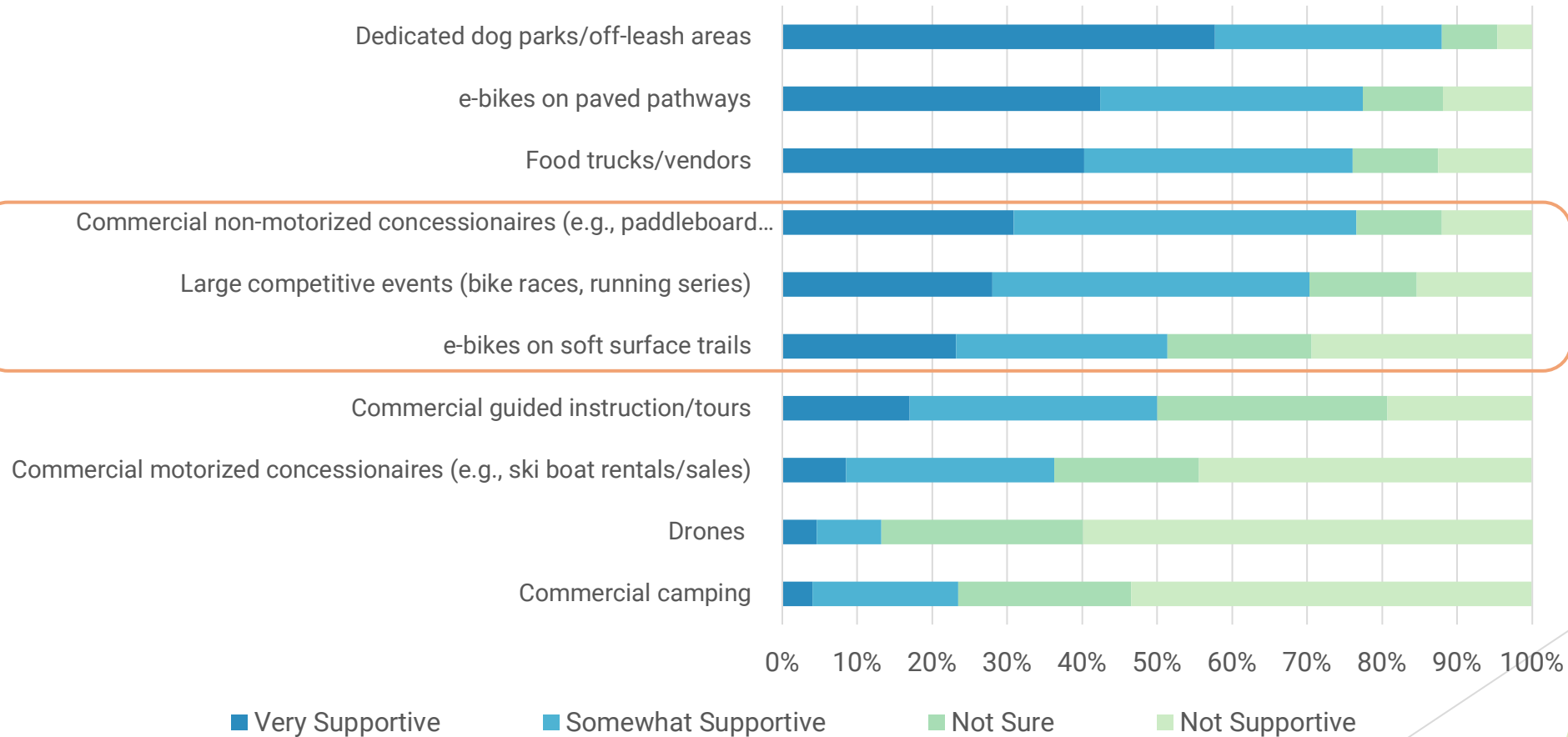
Participation and Demand - Programs

- ▶ Provide more programs of many types, especially community events, volunteers, outdoor skills, youth and teen, older adults, and health and fitness.
- ▶ Not knowing what was offered (52%), prefer self-directed activities (31%), lack of access via bike or sidewalk (31%), classes full (24%).
- ▶ Fees, perception of safety, quality, and registration are not barriers to participation

Type of Program	Percentage of total respondents who participate in a program	Percentage of total respondents who participate in a program in...		Would you like the CITY to provide more?	
		City of McCall	Other (e.g., Federal Land, Non-profit, etc.)	Yes	No
Community events (concerts, festivals, races, walks)	66.3%	61.8%	38.8%	77.9%	22.1%
Stage performances (music, dance, theater)	42.7%	36.0%	18.5%	67.8%	32.2%
Adult fitness and wellness	42.2%	27.5%	24.2%	66.1%	33.9%
Arts, history, and culture	41.0%	36.0%	16.9%	62.8%	37.2%
Environmental education	35.9%	24.7%	24.2%	61.3%	38.7%
Camp programs	33.1%	24.2%	18.0%	61.7%	38.3%
Volunteer opportunities	32.0%	24.7%	19.7%	70.3%	29.7%
Outdoor adventure programs	28.1%	20.2%	16.3%	69.7%	30.3%
Outdoor skills/safety courses (survival skills, wilderness first aid, etc.)	28.1%	16.3%	19.7%	72.4%	27.6%
Before and after school programs	27.5%	23.0%	10.7%	69.8%	30.2%
Youth fitness and wellness programs	25.8%	23.6%	9.6%	74.4%	25.6%
Human services (transportation assistance, meals, health, or other education)	22.5%	21.9%	9.6%	64.3%	35.7%
Teen programs	21.3%	19.1%	7.9%	76.7%	23.3%
Outdoor fitness programs	20.2%	16.9%	9.6%	64.3%	35.7%
Preschool programs	20.2%	16.9%	7.9%	66.7%	33.3%
Youth environmental stewardship programs	19.1%	15.7%	9.6%	69.8%	30.2%
Archery (indoor or outdoor)	15.2%	10.1%	7.9%	39.6%	60.4%
Older adult fitness (age 65+)	14.0%	13.5%	6.2%	60.2%	39.8%
E-sports programs/leagues/tournaments	11.8%	11.2%	5.1%	26.2%	73.8%
Geocaching, augmented reality	10.1%	7.3%	6.2%	18.7%	81.3%
Older adult out of town events/trips	9.0%	8.4%	3.9%	29.3%	70.7%

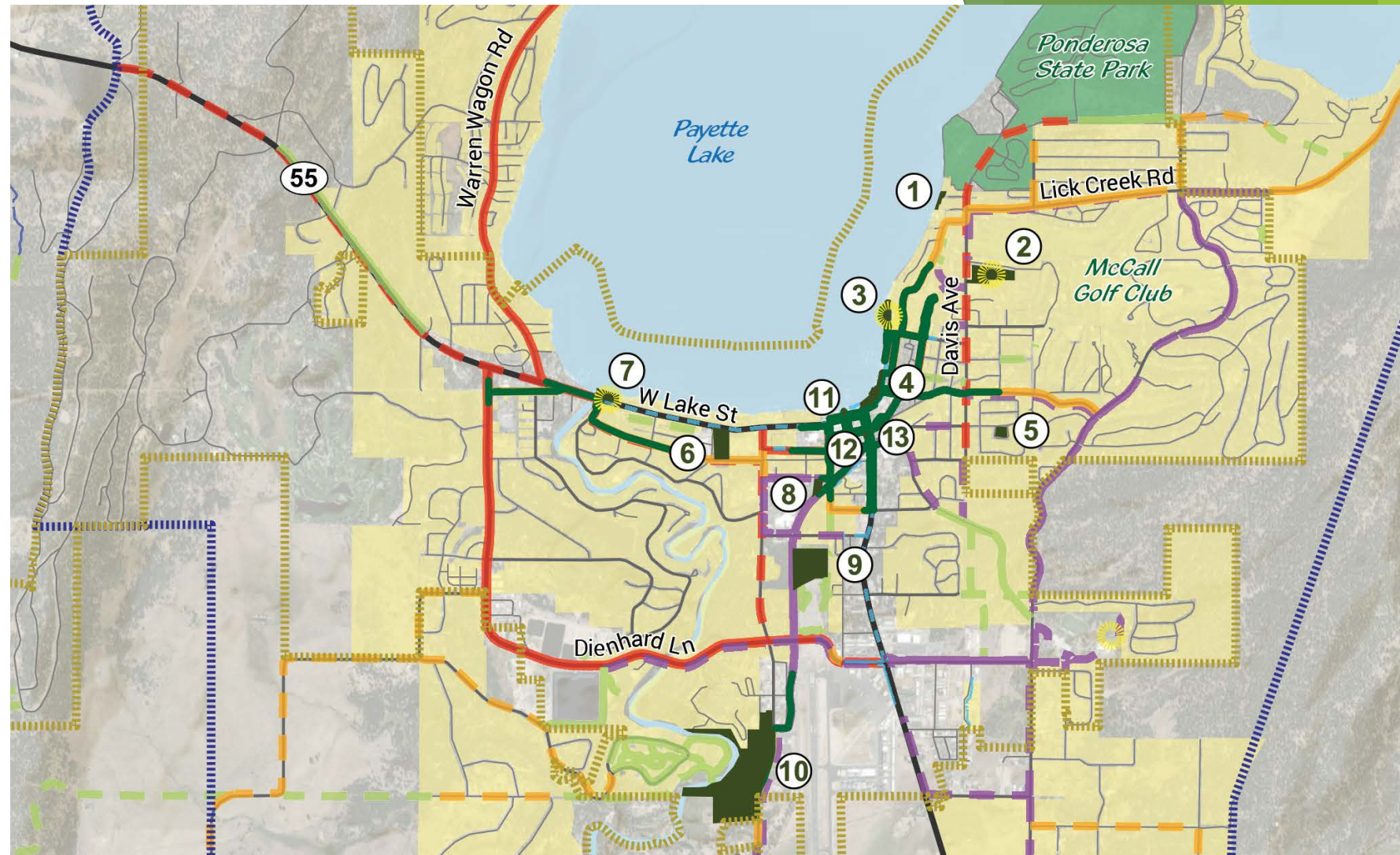
Support for Emerging Trends

Support for Emerging Trends



Walkability Analysis

- ▶ Following pathway infrastructure
- ▶ 10-minute walk

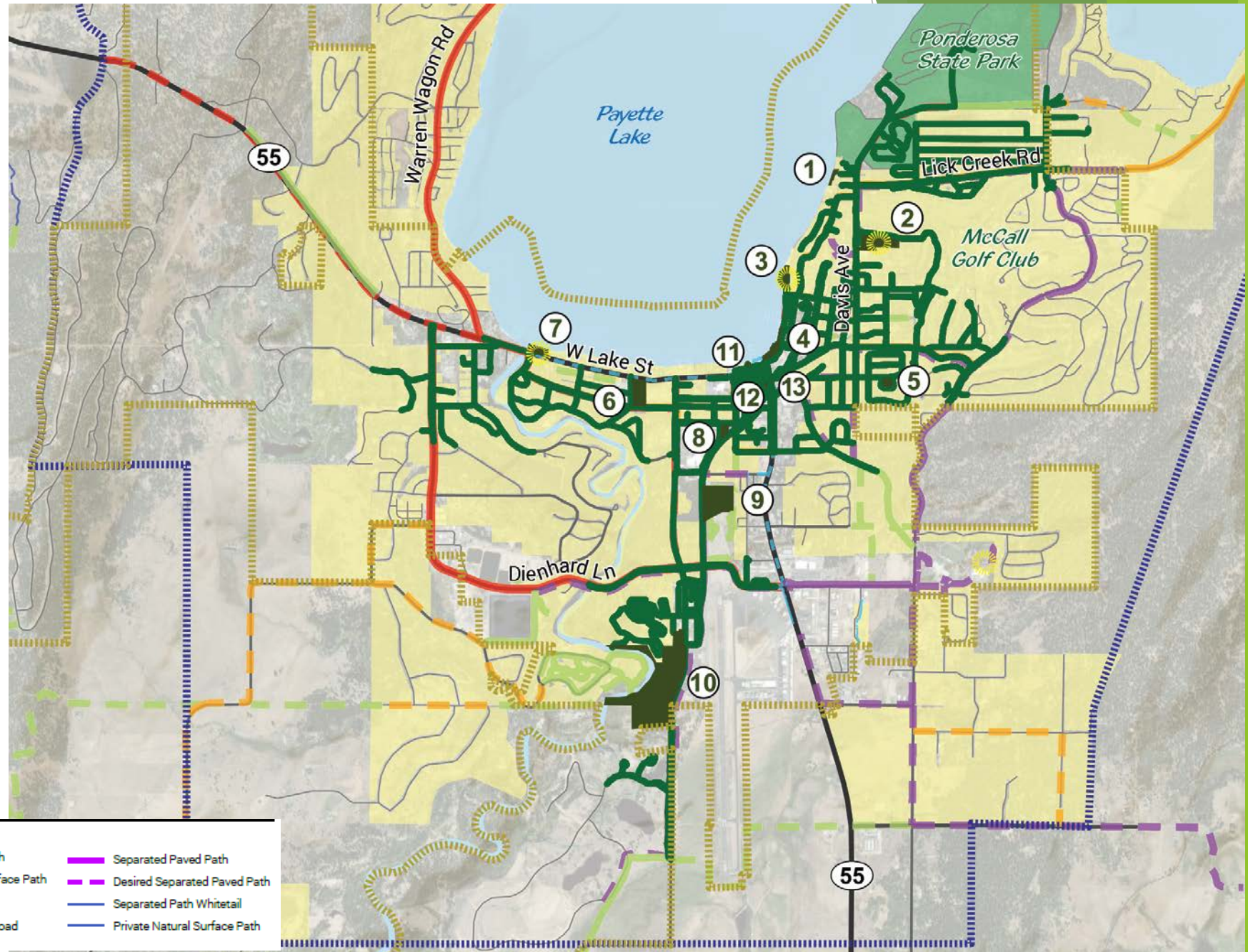


	Residential Areas		1/2 Mile Walkability Buffer
	McCall City Limit		Bike Lane
	McCall Impact Area		Desired Bike Lane
	City Park Properties		Sidewalk
	Playgrounds		Desired Sidewalk
			Share the Road
			Desired Share the Road
			Natural Surface Path
			Desired Natural Surface Path
			Separated Paved Path
			Desired Separated Paved Path
			Separated Path Whitetail
			Private Natural Surface Path

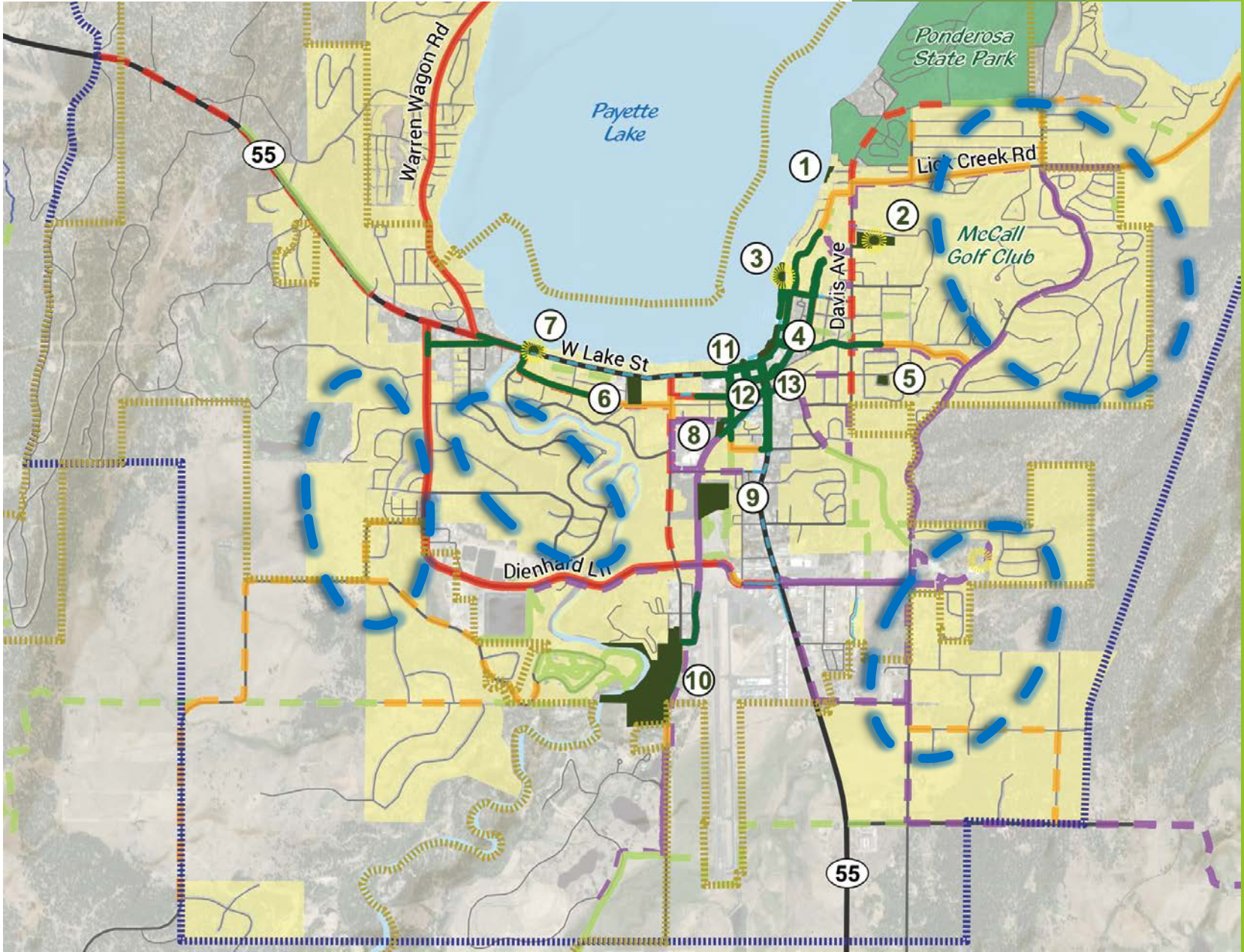
Note: Existing and Desired Pathways from McCall Pathways Plan

Walkability Analysis

- ▶ Following any road except Highway 55



Developed Park Deficient Areas



Preliminary Opportunities

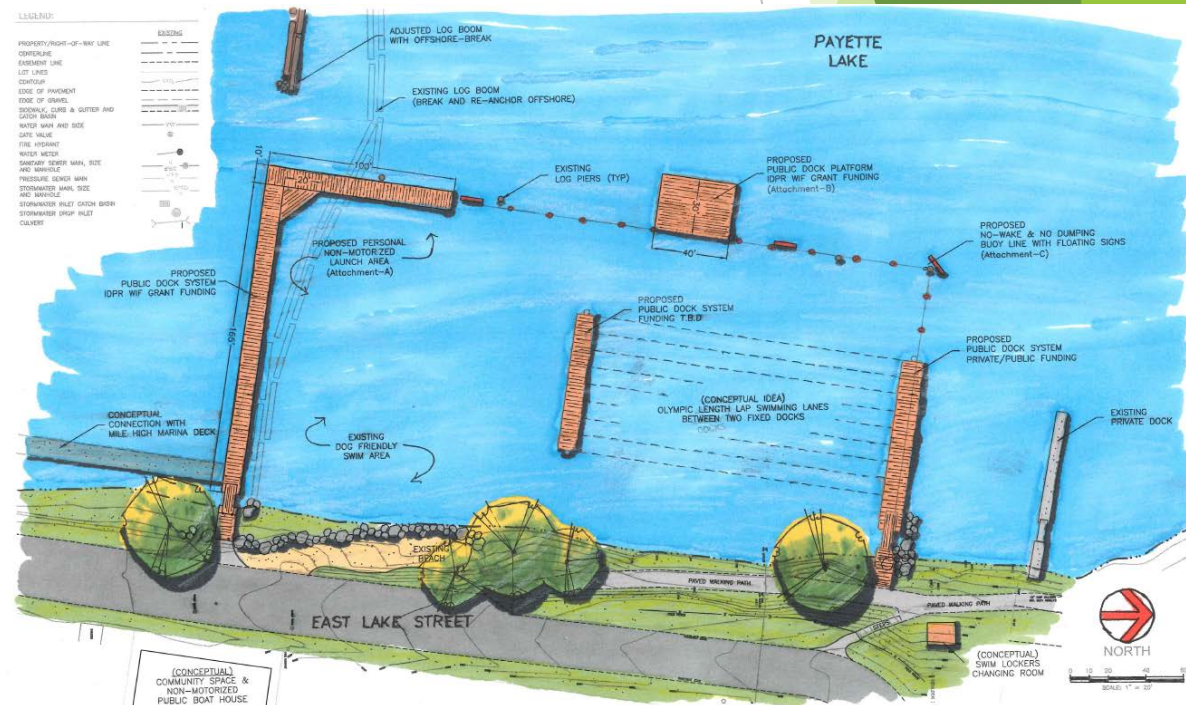
Preliminary Opportunities

▶ Key Opportunity Areas

- ▶ Riverfront Park Build Out /Recreation Center Development
- ▶ Broken Ridge Neighborhood Park
- ▶ Lick Creek Ridge Neighborhood Park
- ▶ Preserve/Acquire open space areas

▶ Past Concept Plans

- ▶ Pathway connections to public lands
- ▶ Whitewater Features/River Access near Rotary Park
- ▶ Marina Expansion/North of Marina Non-motorized access
- ▶ Boathouse
- ▶ Lakefront Boardwalk Concept
- ▶ Disc Golf & Flight Path Mountain Bike Park/Flow Trails



Rvierfront Park Location Map

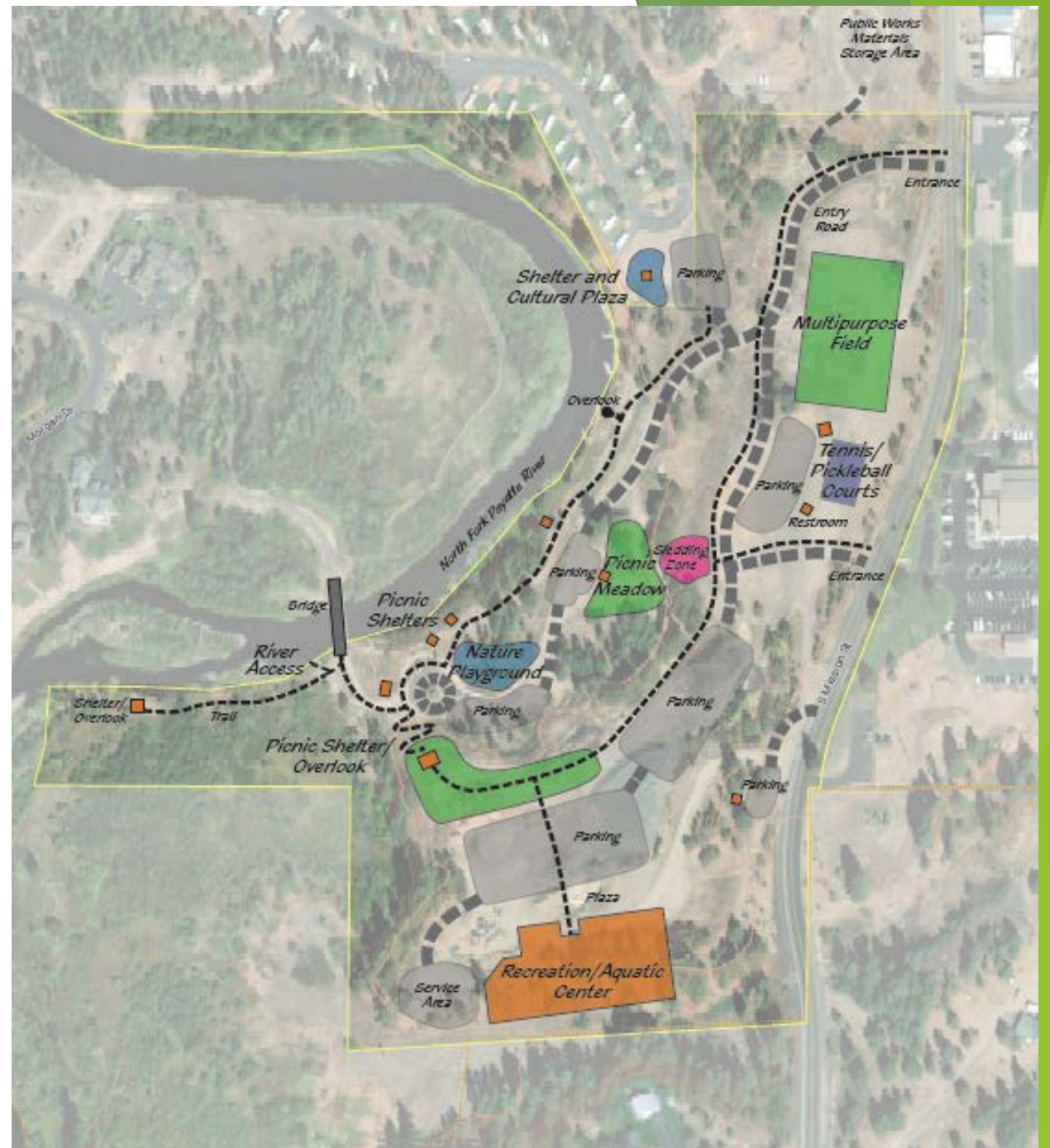


Riverfront Park

- ▶ 35 acres
- ▶ Potential Completion of a Community Park with Natural Park areas
- ▶ Challenges: steep slopes, entry road(s) safety, LWCF funding, need for city-wide storage yard
- ▶ Opportunities Explored To Date:
 - ▶ Recreation/Aquatics Center
 - ▶ Walking paths/Winter trails
 - ▶ Sledding hill
 - ▶ Multi-use field
 - ▶ Improved river access
 - ▶ Community-scaled Natural Play Area
 - ▶ Overlooks
 - ▶ Group and individual picnic areas
 - ▶ Dog park or pickleball courts?
- ▶ Other Alternatives to Explore:
 - ▶ Smaller Rec/Aquatics Center for space for other uses (courts, fields, etc.)
 - ▶ Affordable housing
 - ▶ Events center
 - ▶ Amphitheater
 - ▶ Frisbee Golf Course
 - ▶ Archery Range
 - ▶ Other?



Riverfront Park Concept



Recreation/ Aquatic Center Examples

Moab, UT (50,000 SF + outdoor leisure pool)



Whitefish, MT (54,000 SF)



Windsor, CO (80,000 SF)



Broken Ridge Location Map

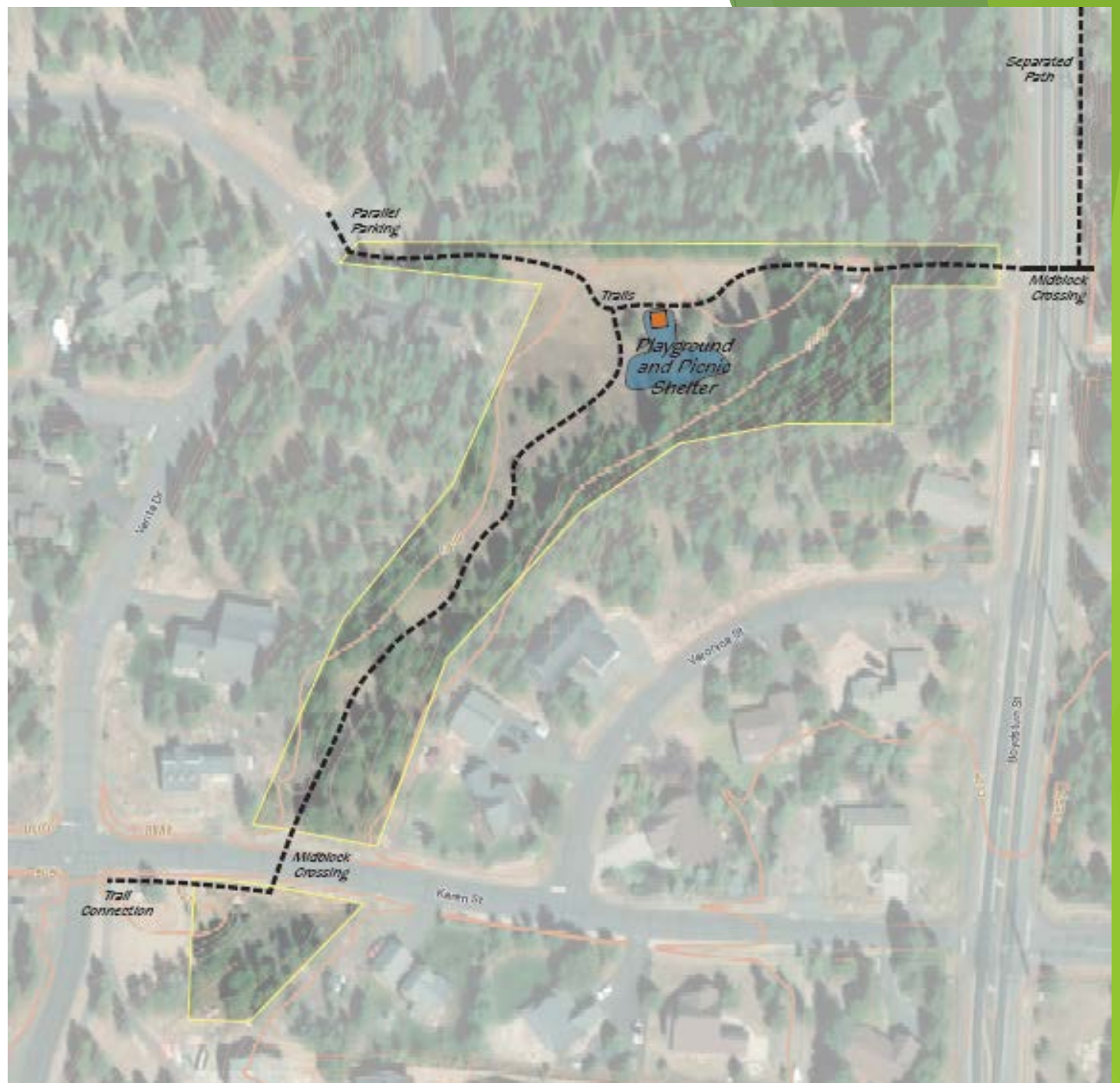


Broken Ridge

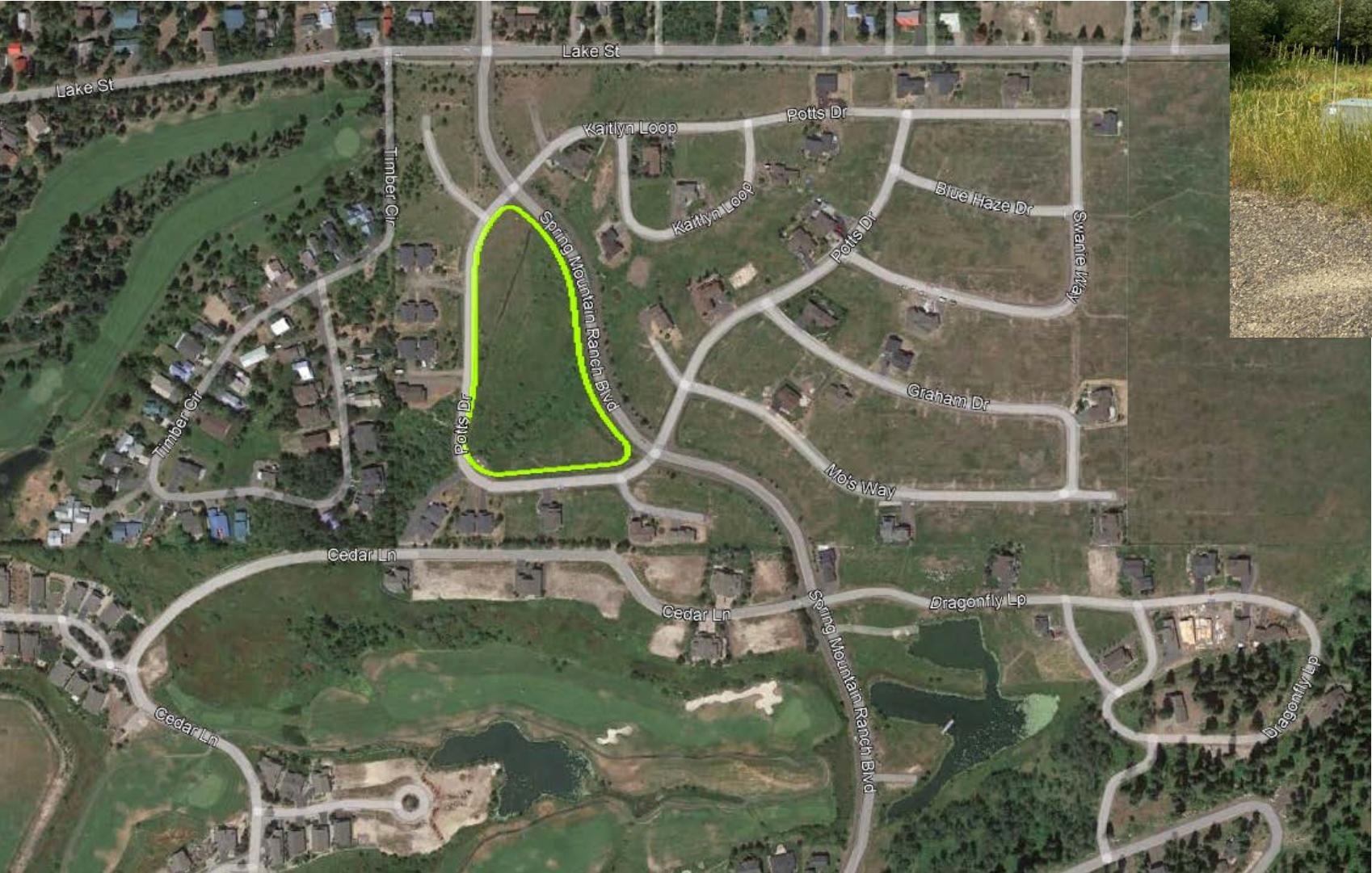
- ▶ 2.84 acres
- ▶ Potential Neighborhood Park
- ▶ Challenges: Lack of street frontage, adjacent neighbors' privacy
- ▶ Opportunities:
 - ▶ Serve park-deficient area
 - ▶ Neighborhood-scale playground
 - ▶ Walking paths
 - ▶ Sheltered picnic area
 - ▶ Informal field
 - ▶ Pollinator plantings
 - ▶ Art
 - ▶ Other?



Broken Ridge Concept



Lick Creek Location Map

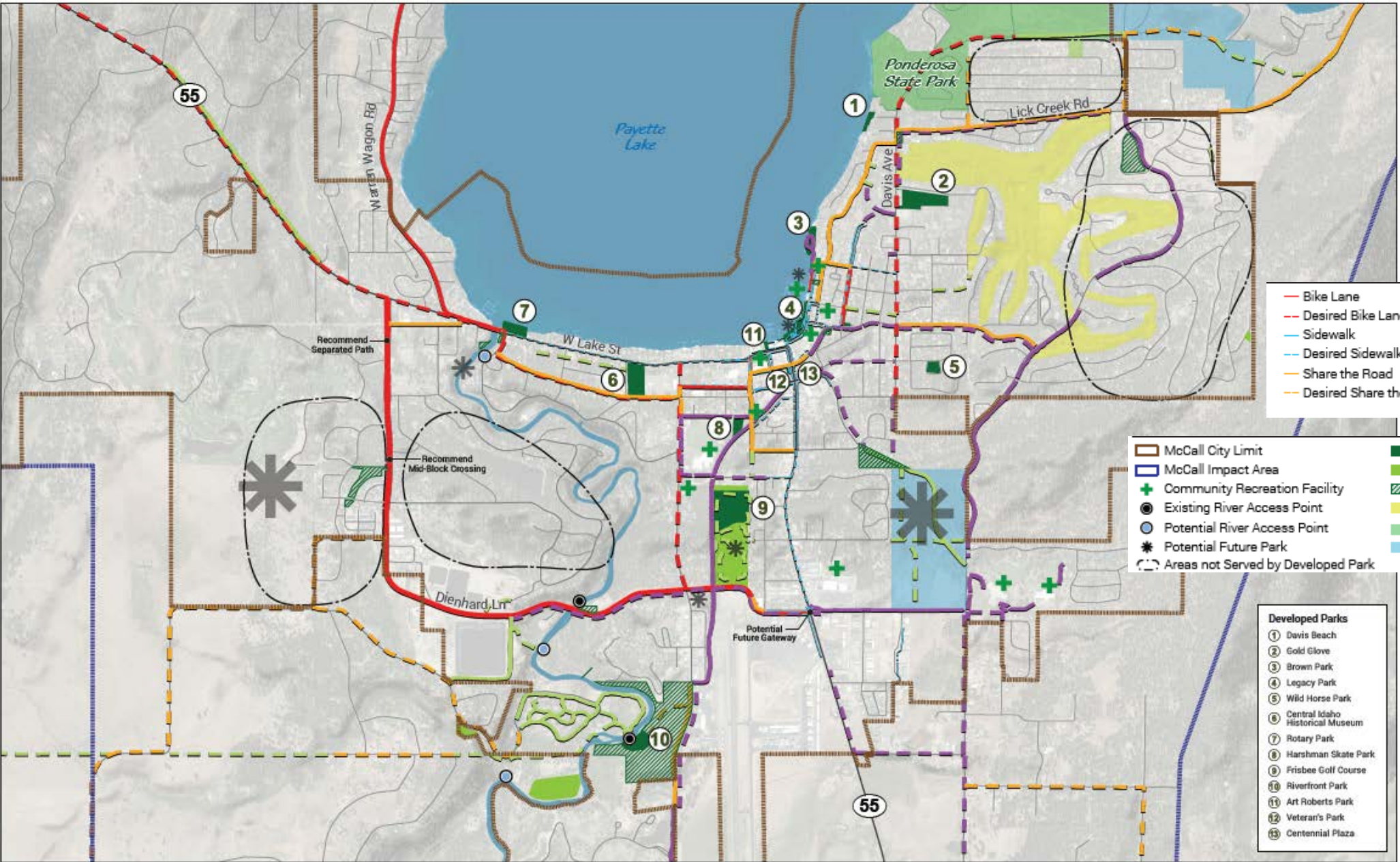


Lick Creek

- ▶ 4.53 acres
- ▶ Potential Neighborhood Park
- ▶ Challenges: Wetland and storm drainage retention
- ▶ Opportunities:
 - ▶ Serve park-deficient area
 - ▶ Walking paths
 - ▶ Nature-oriented play
 - ▶ Community garden
 - ▶ Pollinator area
 - ▶ Picnic tables/small shelter
 - ▶ Art
 - ▶ Other?



Opportunities Map



— Bike Lane	— Separated Paved Path
— Desired Bike Lane	— Desired Separated Paved Path
— Sidewalk	— Natural Surface Path
— Desired Sidewalk	— Desired Natural Surface Path
— Share the Road	
— Desired Share the Road	

— McCall City Limit	— Developed Parks
— McCall Impact Area	— Open Space
+ Community Recreation Facility	— Undeveloped City Properties (Managed by Parks)
● Existing River Access Point	— Public Golf Course
○ Potential River Access Point	— State Park
* Potential Future Park	— State Department of Lands
○ Areas not Served by Developed Park	

- Developed Parks**
- ① Davis Beach
 - ② Gold Glove
 - ③ Brown Park
 - ④ Legacy Park
 - ⑤ Wild Horse Park
 - ⑥ Central Idaho Historical Museum
 - ⑦ Rotary Park
 - ⑧ Harshman Skate Park
 - ⑨ Frisbee Golf Course
 - ⑩ Riverfront Park
 - ⑪ Art Roberts Park
 - ⑫ Veteran's Park
 - ⑬ Centennial Plaza

Funding Overview

- ▶ Operating Budget: \$500,000/year
 - ▶ Primary funding source: General Fund
 - ▶ Other funding sources: Recreation Program fees (100% cost recovery), leases/concessionaires, facility rental fees, Local Option Tax
- ▶ Capital Budget: Varies on planned projects
 - ▶ Primary funding source: Grants and Local Option Tax

Next Steps:

- ▶ Refine Master Plan, Recommendations, and Concept Plans
- ▶ Develop project level costs
- ▶ Develop implementation plan and funding strategies
- ▶ Prioritize projects



Breakout room instructions

- ▶ In-person Vs Virtual Discussions
 - ▶ Open house style - comment on boards
 - ▶ 2 groups virtually
- ▶ Discussion Topics/Questions:
 - ▶ Opportunity for more discussion and input
 - ▶ What do you want to see where?
 - ▶ What other park, recreation, and open space opportunities are important?
 - ▶ Input on initial concepts and recommendations

PLEASE SIGN-IN!

Opportunities Workshop: November 16, 2022

15
online



Name	Email	Join Project Mailing List?
Steve Jan	SCJCAPSON@MSN.COM	
DAVE PERRY	PARINAMA@HOTMAIL.COM	
John Farmer	farmerjd28@msn.com	
Avi Azoulay	avi.azoulay@mccallrealestate.com	
LISA BECK	LBECK@EPIKOSDESIGN.COM	
Matt Linde	matt.linde@idpr.idaho.gov	
Glenn Jacobsen	gljacobsen@frontier.net.net	
TERRY EDVALSON	t.edvalson@conic.com	
TODD MCKENA	Tmckena14@YAHOO	
Jay P.		

PLEASE SIGN-IN!

Opportunities Workshop: November 16, 2022



Name	Email	Join Project Mailing List?
Larry Hauder	lhauder2@gmail.com	
Phil Schoenberger	phil.schoenberger@gmail.com	
Erin Fanning	erinfanning@yahoo.com	
Evelyn Bantfield	abantfam@aol.com	
Nancy Bloomfield	nancyjbloomfield@yahoo.com	
Joey Pietri	joey@legendercrossfit.com	
Karla Eitel	Karla.bradley.eitel@gmail.com	
Eric Young	EPYoung1@outlook.com	

Name (Original Name)	User Email	Role
Kristina Kachur (Kristina	ftcenv@logansimpson.com	Consultant
Stefanie Bork	sbork@mccall.id.us	Staff logged in for the in-person meeting room
BrianDunkel (Brian Dunkel)	brian@urbansoccerpark.com	
Susan Bechdel	bechdelsusan@gmail.com	
Nancy bloomfield	nancyjbloomfield@yahoo.com	
Nicole Goodrich	arctictwilight6010@gmail.com	
Katy Stoll	kt_latham@hotmail.com	
Kim Mihlfeith	kimipelimt@gmail.com	
Larry Hauder	lhauder2@gmail.com	
Dan Arseneau	darseneau@logansimpson.com	Consultant
Jana McKenzie	jmckenzie@logansimpson.com	Consultant
Michelle Rentzsch	michellerentzsch@gmail.com	
Kurt Wolf	kwolf@mccall.id.us	Staff
Paul Christensen	paulkris0546@msn.com	
Donna Daniels	donnadaniels771@gmail.com	
Melissa Coriell	mcoriell@mdsd.org	
derek ford	derekford1674@gmail.com	
Jared Schuster	schuster.ja@gmail.com	
Meredith Todd	mtodd@mccall.id.us	
Wayne Ruemmele	info@cimbarides.org	
Lynn Siegel	lynnsiegel@hotmail.com	
william minshall	minshallw12@gmail.com	
jocelyn pulver	jpulver1212@gmail.com	
Jim Pace	mccallboater@gmail.com	
Forrest Stanley	alpinemist@icloud.com	
Scott Acker		Listened in with Kurt